

Supplementary Material

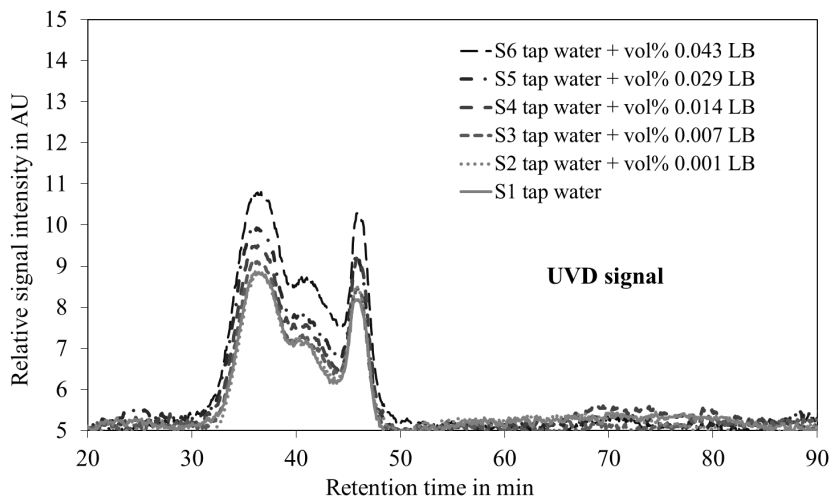


Figure S1: UVD signal of LC analysis for all samples (S1 – S6). Analysis were performed before the start of online-monitoring experiments.

Table S1: Overview about maximum TCC (TCC_{max}) including final amount of HNA (HNA_{end}) and LNA (LNA_{end}) cells as well as maximum growth rate (μ_{max}) of each experiment.

Sample	Description	TCC_{max} in cells/mL	HNA_{end} in cells/mL	LNA_{end} in cells/mL	μ_{max} in 1/h
S1	Tap water	3.90×10^4	2.50×10^4	1.4×10^4	0.10
S2	Tap water + vol% 0.001 LB	5.30×10^5	4.96×10^5	3.4×10^4	0.30
S3	Tap water + vol% 0.007 LB	1.21×10^6	1.12×10^6	9.2×10^4	0.37
S4	Tap water + vol% 0.014 LB	2.78×10^6	2.38×10^6	3.9×10^5	0.43
S5	Tap water + vol% 0.029 LB	4.49×10^6	3.64×10^6	8.6×10^5	0.48
S6	Tap water + vol% 0.043 LB	5.52×10^6	4.70×10^6	8.2×10^5	0.51

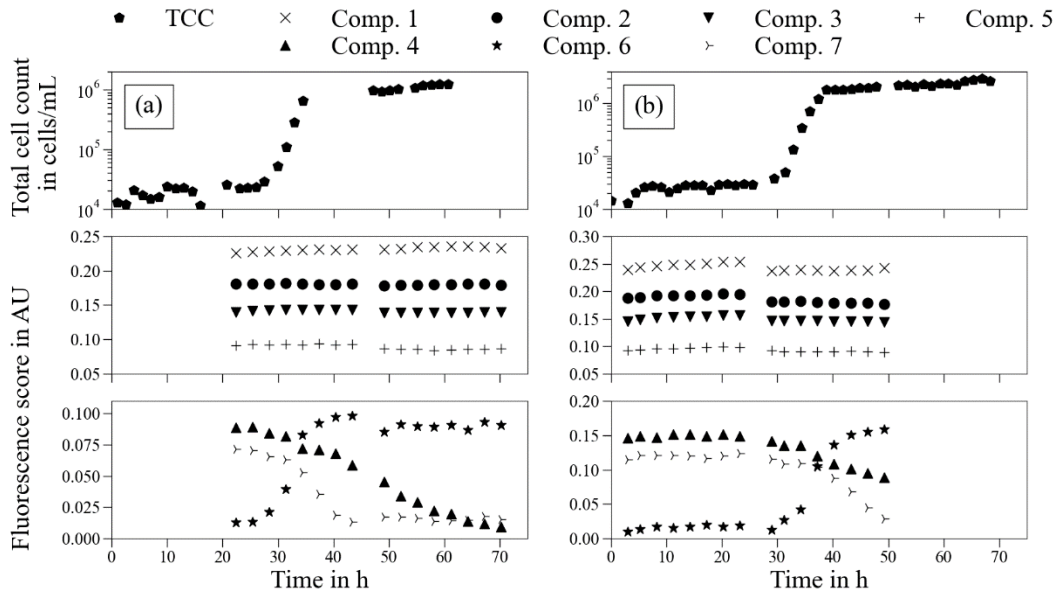


Figure S2: Online-monitoring of total cell count (TCC) and fluorescence score (components 1 – 7) over experimental period of approximately 70 hours. Tap water samples with different LB medium concentration: (a) – S3 tap water + vol% 0.007 LB medium; (b) – S4 tap water + vol% 0.014 LB medium.

Table S2: Overview about final TOC (TOC_{end}) in the end of each experiment.

Sample	Description	TOC_{end} in mg/L
S1	Tap water	0.55
S2	Tap water + vol% 0.001 LB	0.64
S3	Tap water + vol% 0.007 LB	0.65
S4	Tap water + vol% 0.014 LB	0.86
S5	Tap water + vol% 0.029 LB	0.95
S6	Tap water + vol% 0.043 LB	1.10

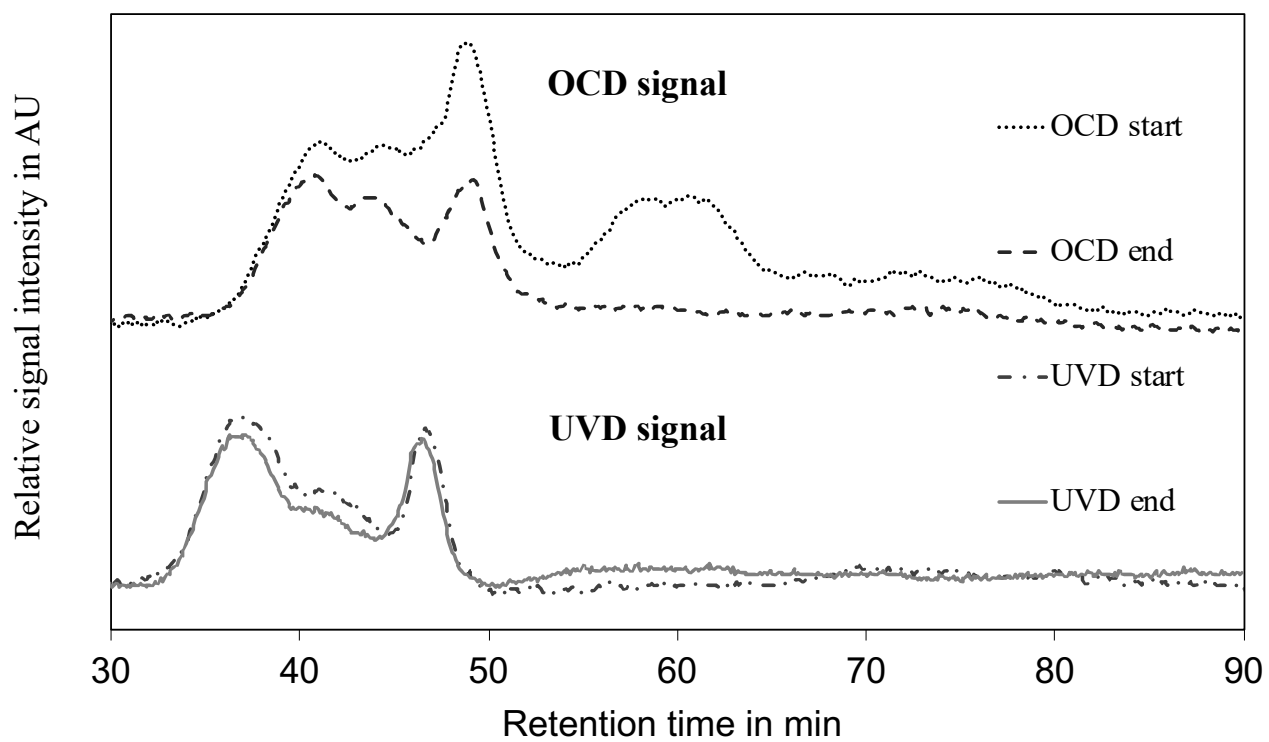


Figure S3: LC-OCD-UVD results of S4 tap water + vol% 0.014 LB before and after the experimental duration.