

A deep-learning-based approach towards identifying combined faults in structural health monitoring

Heba AL-NASSER, Thamer AL-ZURIQAT, Kosmas DRAGOS, Carlos CHILLÓN GECK,
and Kay SMARSLY

Institute of Digital and Autonomous Construction, Hamburg University of Technology,
Germany, heba.al-nasser@tuhh.de

Abstract. Fault diagnosis (FD), encompassing fault detection, isolation, identification and accommodation, is critical for reliable structural health monitoring (SHM) systems, ensuring correction of sensor faults that may corrupt or invalidate monitoring data. While sensor fault identification has received scarce attention within FD of SHM systems, recent methods have been proposed for identifying single sensor faults. Nonetheless, real-world SHM systems are prone to combined faults, i.e. different faults that affect individual sensors simultaneously. Identifying combined sensor faults is essential for improving the quality of FD and for gaining insight into the causes of sensor faults. This paper presents an approach for identifying combined sensor faults, referred to as ICSF approach, aiming to identify sensor faults occurring simultaneously in individual sensors using time-series data, thereby improving the quality of FD in SHM systems. Leveraging a recurrent neural network, specifically a long short-term memory network, a classification algorithm is implemented for mapping time-series data to combined sensor faults. The ICSF approach is validated using acceleration measurements collected by a faulty sensor from a real-world SHM system installed on a pedestrian bridge. The results demonstrate the effectiveness of the ICSF approach in identifying combined sensor faults, enhancing sensor FD in real-world SHM systems.

Keywords: Identification of combined sensor faults, sensor fault diagnosis, structural health monitoring, classification networks, long short-term memory.

1. Introduction

Structural health monitoring (SHM) utilizes data collected by sensors (“sensor data”) for non-destructive evaluation of structures, ensuring continuous updates on structural conditions, to enhance user safety and enable cost-efficient maintenance [1]. Long-term sensor operation in SHM systems may lead to sensor faults, due to aging and harsh environmental conditions, which need to be eradicated via fault diagnosis [2].

Fault diagnosis in SHM involves fault detection to capture faults, fault isolation to localize the faults, fault identification to determine fault types, and fault accommodation to compensate for the effects of faults [3]. Commonly known sensor fault types encompass



various deviations from actual sensor data, including (i) *bias*, characterized by consistent divergence from actual values, (ii) *drift*, involving gradual deviations of sensor data over time, (iii) *gain*, expressed as constant scaling of sensor data, (iv) *precision degradation*, observed when white noise contaminates sensor data, (v) *complete failure*, manifesting as a constant value (“constant complete failure”) or *noise* (“noisy complete failure”) that replaces sensor data over time regardless of actual structural changes, and (vi) *outliers*, representing discontinuous observations deviating from sensor data at individual time points [4, 5].

Fault diagnosis (FD) approaches in SHM systems, reported in literature for decades, have centered around fault detection, isolation, and accommodation. In [6], Kullaa has proposed a detection, isolation, and accommodation approach for sensor faults in SHM systems, while Steiner et al. have proposed support vector regression for decentralized sensor fault detection and isolation [7]. Deng et al. have conducted a review of sensor fault detection approaches in SHM, detailing the advantages, disadvantages, and scope of each method [8]. Nevertheless, sensor fault identification has received limited attention so far, although knowledge of fault types may be crucial for enhancing the quality of fault diagnosis and understanding the root causes of sensor faults in SHM systems. The reason fault identification is often neglected is the complexity of modeling, caused by the mapping of sensor data to fault types, that increases the computational burden. However, recent studies have started exploring sensor fault identification using various approaches, including rough set theory [9], convolutional neural networks [10], and support vector machine (SVM) [11]. The fault identification studies found in literature assume the existence of single fault types, i.e. individual faults happening one at a time. However, combined sensor faults, i.e. multiple sensor faults occurring simultaneously in individual sensors, may occur in real-world SHM systems [12] and have received scarce attention. Sporadic approaches on identifying combined sensor faults have been reported in other disciplines. For instance, Cheng et al. [13] have used adaptive particle swarm optimization and SVM for identifying combined sensor faults, and Abboush et al. [14] have employed ensemble long short-term memory (LSTM) networks and random forests to identify combined sensor faults. Nonetheless, not all commonly known sensor faults have been considered in literature for identifying combined sensor faults.

This study proposes an approach for identification of combined sensor faults (ICSF) in SHM systems. The ICSF approach employs an LSTM network for classifying sensor data into types of combined sensor faults. Validation tests are conducted using real-world SHM data (acceleration measurements) recorded from a pedestrian bridge. The results show that the ICSF approach can accurately and reliably identify combined sensor faults, enabling better understanding of the causes of sensor faults in SHM systems, which leads to improving the quality of SHM systems. In the remainder of the paper, an overview of the ICSF approach is given. Then, the implementation and validation using real-world sensor data are presented. Finally, a discussion of the results and conclusions with future research directions are provided.

2. Overview of the ICSF approach

This section presents an overview of the ICSF approach comprising preparation of input data and development of the LSTM network, which, upon finishing training, results in a “classification model” capable of identifying combined sensor faults. The ICSF approach builds upon previous work of the authors on fault diagnosis, specifically on the AFDAR approach for fault detection, isolation, and accommodation, presented in [15]. Although the fault identification part seems as an add-on to the AFDAR approach, the ICSF approach is designed as standalone, implicitly integrating the fault detection part, as will be shown in the

paper. Figure 1 depicts the ICSF approach through an activity diagram, consisting of two main *activities*, “preparing the input dataset” and “developing the classification model”. The former activity involves four actions, while the latter activity comprises three actions, as further described.

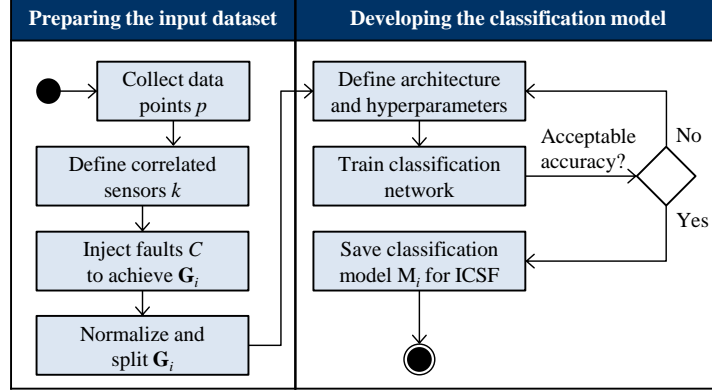


Fig. 1. Illustration of the ICSF approach: Activities and actions

2.1 Preparing the input dataset

The first activity of the ICSF approach is preparing the input dataset, in which sensor data is first collected over a “data collection period”, with each sensor gathering p data points. Next, a correlation analysis determines the number of “correlated sensors” k , which corresponds to the number of inputs for the LSTM input layer. Correlation is essential for distinguishing trends in sensor data attributed to structural behavior from trends indicative of faults; this distinction is necessary for fault detection, as shown in [15]. The correlated sensors are labelled as i ($i = 1, \dots, k$), and sensor data $\mathbf{f}_{1 \rightarrow k}$ is stored in matrix $\mathbf{A}^{p \times k}$, as shown in Equation 1.

$$\mathbf{A}^{p \times k} = [\mathbf{f}_1 \quad \mathbf{f}_2 \quad \dots \quad \mathbf{f}_k] = \begin{bmatrix} f_{1,1} & f_{1,2} & \dots & f_{1,k} \\ f_{2,1} & f_{2,2} & \dots & f_{2,k} \\ \vdots & \vdots & \ddots & \vdots \\ f_{p,1} & f_{p,2} & \dots & f_{p,k} \end{bmatrix} \quad (1)$$

Sensor faults are artificially injected into the sensor data to train the LSTM networks for identifying combined sensor faults in real-world SHM systems. The data stored in matrix \mathbf{A} is replicated into the input dataset \mathbf{G}_i ($i = 1, \dots, k$). Thereafter, both single and combined sensor faults are artificially injected into the vector \mathbf{f}_i , representing the data collected from sensor i . The types of the sensor faults injected are stored in the classification output dataset \mathbf{O}_i , which also includes a “non-faulty” class, essentially covering the fault detection, rendering the proposed approach self-sufficient. As a result, the input dataset \mathbf{G}_i includes non-faulty sensor data from sensors $(1, 2, \dots, i-1, \dots, k)$, in addition to sensor data from sensor i consisting of single and combined faults.

The total number of injected sensor fault C depends on the number of single sensor faults N , the number of single sensor faults n included in the combinations, and the number of single sensor faults m in each combination, as shown in Equation 2.

$$C(n, m) = \frac{n!}{m!(n-m)!} + N \quad (2)$$

Upon injecting the sensor faults, data normalization is applied to the input dataset \mathbf{G}_i using minimum-maximum normalization, shown in Equation 3, to prevent overfitting in the classification models, caused by extreme values in the sensor data.

$$x_{normalized} = \frac{x - x_{min}}{x_{max} - x_{min}} \quad (3)$$

In Equation 3, $x_{normalized}$ represents the normalized sensor data, x denotes a data point, and x_{min} and x_{max} are the minimum and maximum data points, respectively. The normalized dataset $\tilde{\mathbf{G}}_i$ is then split into training ($\mathbf{G}_{t,i}$), validation ($\mathbf{G}_{v,i}$), and testing ($\mathbf{G}_{s,i}$) datasets for training the LSTM networks and developing the classification models.

2.2 Developing the classification model

The second activity of the ICSF approach involves developing the classification model. The training dataset $\mathbf{G}_{t,i}$ is used for training the i -th LSTM network, for each correlated sensor i ($i = 1, \dots, k$), which – upon completing training – results in the classification model M_i . During training, the training dataset $\mathbf{G}_{t,i}$ is sequentially fed into the LSTM network in batches, and the classification accuracy is computed against the corresponding classes of the output dataset $\mathbf{O}_{t,i}$. Training iterations adjust the weighted connections between neurons until the Softmax function probabilities achieve a predefined classification accuracy level. At predefined intervals, the validation dataset $\mathbf{G}_{v,i}$ confirms classification accuracy trends and fine-tunes hyperparameters to prevent overfitting. After training, model accuracy is assessed using the testing dataset $\mathbf{G}_{s,i}$, whose classification accuracy is calculated by measuring correct predictions among the total predictions. If the accuracy is satisfactory, the classification model of sensor i is saved. Otherwise, the LSTM architecture is adjusted, and a new LSTM network is trained, with new hyperparameters. The resulting model M_i recognizes features in the input dataset $\tilde{\mathbf{G}}_i$ and classifies sensor data into combined fault types. The same process is repeated for all sensors. The ICSF approach is implemented and validated in an SHM system on a pedestrian bridge, as described in the following section.

3. Implementation and validation of the ICSF approach

This section shows the implementation and validation of the ICSF approach. The implementation description is structured in alignment with the activities of the ICSF approach, presented in the previous section, and a validation test is conducted on a pedestrian bridge to showcase the effectiveness of the ICSF approach in identifying combined sensor faults in real-world SHM systems.

3.1 Overview of the bridge and the SHM system

The validation test utilizes sensor data, i.e. acceleration measurements, collected by an SHM system installed on a pedestrian overpass bridge in Evosmos, Thessaloniki, Greece, as depicted in Figure 2 [16]. The pedestrian bridge was constructed in 2016 and features a composite structure with a steel framework supporting a reinforced-concrete deck. The deck measures 35 m in length and 4.60 m in width and is supported by cylindrical reinforced-concrete columns connected to two steel girders at each end using elastomeric bearings. The composite structure includes inwardly inclined steel arches, connected by steel cables, and reinforced by steel beams for lateral stability.

The SHM system comprises four accelerometers, namely S_1 , S_2 , S_3 , and S_4 , previously validated as non-faulty sensors. The accelerometers are evenly distributed along the central axis, spaced 7 m apart. In addition, a “faulty” accelerometer, labeled FS_2 , i.e. identified as faulty in previous experiments, is placed in close proximity to the non-faulty accelerometer S_2 . Figure 3 provides a top view of the pedestrian bridge, indicating the positions of both faulty and non-faulty accelerometers.



Fig. 2. The pedestrian bridge in Evosmos, Greece

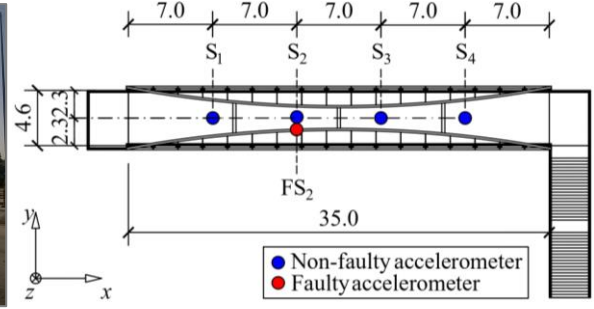


Fig. 3. Top view of the pedestrian bridge with the accelerometers

3.2 Implementation of the ICSF approach on the bridge

The implementation involves collecting sensor data from the SHM system of the pedestrian bridge, and developing the classification models using MATLAB [17]. The fault identification capabilities of the classification models are verified by artificially generating and injecting combined sensor faults into the sensor data, which is then normalized and split for training, validation, and testing. The LSTM networks are first created and trained until satisfactory accuracy is achieved, and the corresponding classification models are saved for identifying combined sensor faults using newly collected data.

The acceleration measurements are obtained from the non-faulty accelerometers S_1 , S_2 , S_3 , and S_4 , over a 90-minute data collection period at a sampling rate of 128 Hz. The total number of data points is $p = 692,628$, recorded by each accelerometer. Next, Pearson correlation analysis is conducted on the acceleration measurements to identify the correlated sensors. The analysis reveals a strong correlation (> 0.90) among all four accelerometers, i.e. $k = 4$. The lowest correlation coefficient is observed at 0.937 between sensors S_1 and S_4 . Then, the acceleration measurements of the correlated accelerometers $f_{1 \rightarrow k=4}$ are stored in matrix $\mathbf{A}_{692628 \times 4}$. Seven types of single sensor faults ($N = 7$) are considered, comprising bias, drift, gain, precision degradation, complete failure (constant and noisy), and outliers. For combined sensor faults, combinations of two single faults within the same sensor ($m = 2$) are explored. Complete failure (complete and noisy) inherently cannot be combined with other sensor faults and, is excluded from the combinations ($n = 5$), resulting in a total of $C(n, m) = 17$ single and combined sensor faults.

The acceleration measurements, initially stored in matrix $\mathbf{A}_{692628 \times 4}$, are used to generate four input datasets, each divided into 17 subsets corresponding to the sensor fault types. The 17 fault types are artificially injected into the i -th input dataset \mathbf{G}_i ($i = 1, \dots, 4$), with the corresponding classes stored in the i -th output dataset \mathbf{O}_i ($i = 1, \dots, 4$). Next, the input dataset i is normalized according to Equation 3, and the normalized dataset $\tilde{\mathbf{G}}_i$ is split into a 70% training dataset (484,838 data points), a 15% validation dataset (103,894 data points), and a 15% testing dataset (103,894 data points). The normalization parameters, x_{\min} and x_{\max} , used during training, are saved for future application to new sensor data, fed into the classification model M_i . The initial architecture for the LSTM network is defined, featuring a sequence input layer with a length equal to the number of correlated sensors ($k = 4$), and an output layer comprising a fully-connected layer, the Softmax function, and a classification layer with 17 classes, representing one sensor fault per class. After a trial-and-error process, three hidden layers are defined, each consisting of an LSTM layer followed by a dropout layer with the dropout probability set equal to 20%. Four classification models (M_1 , M_2 , M_3 , and M_4) are developed, each dedicated to classifying combined sensor faults in sensors S_1 , S_2 , S_3 , and S_4 respectively. The LSTM network architecture is illustrated in Figure 4.

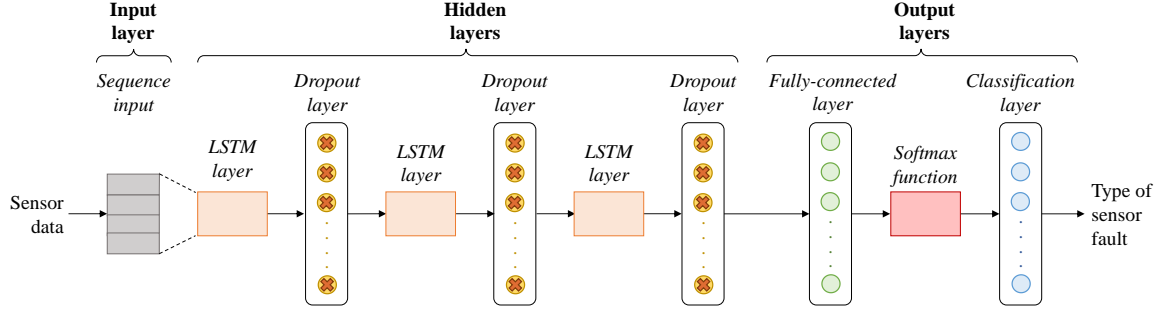


Fig. 4. Network architecture of the classification models

Upon training, the model accuracy is assessed using the testing dataset, with an accuracy threshold set to 85%, determined based on previous experience [15]. All models exhibit accuracy values higher than 90%, with the lowest accuracy value of 90.3% observed in model M_2 . The capability of the ICSF approach to identify real-world sensor faults is showcased in the following subsection.

3.3 Validation of the ICSF approach on the bridge and results

The validation test uses acceleration measurements from the SHM system of the pedestrian bridge, specifically from the faulty accelerometer FS_2 . The classification model M_2 , trained to identify faults in sensor S_2 , is repurposed to identify faults in sensor FS_2 . Data recorded by the sensors S_1 , FS_2 , S_3 , and S_4 is used as input into the classification model M_2 . The acceleration measurements have a duration of approximately 7 minutes at a sampling rate of 128 Hz, totaling $p = 53,688$ data points. The classification model identifies combined sensor faults in four time-windows, indicated in Figure 5 and listed in Table 1. The effectiveness of fault identification by M_2 is validated by visually comparing the acceleration measurements from the non-faulty sensor S_2 and the faulty sensor FS_2 . The acceleration measurements from the faulty accelerometer FS_2 significantly deviate from those of the non-faulty accelerometer S_2 due to the faults occurring in FS_2 .

Table 1: Results of the classification model M_2 .

| Window | Start data point | End data point | Start time (s) | End time (s) | Combined sensor fault | Probability |
|--------|------------------|----------------|----------------|--------------|-----------------------|-------------|
| 1 | 2,100 | 6,200 | 16.4 | 48.4 | Drift + gain | 94.9 % |
| 2 | 7,900 | 13,500 | 61.7 | 105.4 | Bias + drift | 100 % |
| 3 | 25,300 | 29,100 | 197.6 | 227.3 | Bias + drift | 100 % |
| 4 | 46,800 | 48,300 | 365.6 | 377.3 | Bias + outliers | 90.3 % |

As shown in Figure 5, window 1 exhibits a linear trend and scaling of the acceleration measurements, indicative of drift and gain. In window 2, a downward shift of the measurements occurs followed by linear deviation, which is identified as bias and drift. A similar trend is observed in window 3, albeit the combined sensor fault starts with drift and is followed by bias. Finally, window 4 exhibits a constant offset combined with isolated peaks in the measurements, which is a characteristic of bias combined with outliers. While the classification model identifies faults in windows 1, 2, and 3 with high confidence, expressed as classification probability, the identification of “bias + outliers” in window 4 is somewhat challenging, due to the intermittent nature of outliers within the data, leading to imbalanced training data for the LSTM network, i.e. fewer occurrences of outliers in the training dataset, compared to the other sensor faults. Nevertheless, identifying outliers in fault diagnosis can be covered by signal pre-processing techniques. The results of the

validation tests show the capability of the ICSF approach in identifying both single and combined sensor faults, indicating the effectiveness of the approach in enhancing the quality of fault diagnosis by providing insights into the causes leading to sensor faults in real-world SHM systems.

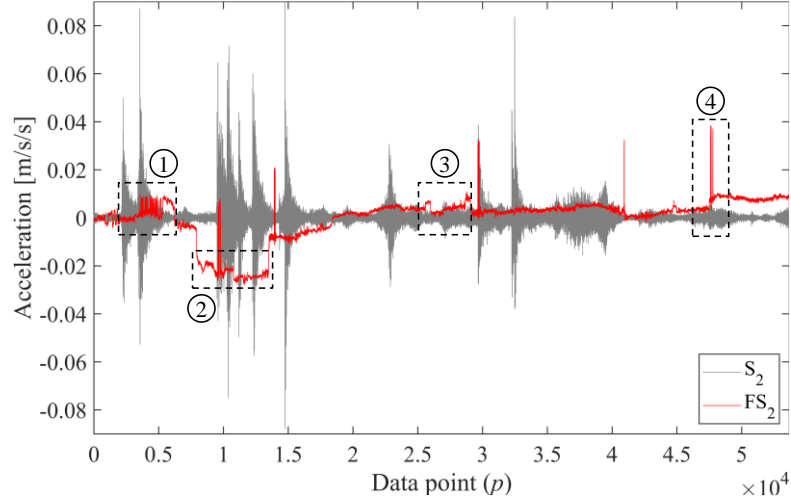


Fig. 5: Acceleration measurements collected by the non-faulty sensor S_2 and the faulty sensor FS_2

4. Conclusions and future work

Fault diagnosis in SHM systems involves fault detection, isolation, identification, and accommodation. However, fault identification, particularly for combined sensor faults, has received limited attention. Current FD methods often focus on single sensor faults, overlooking real-world scenarios, where combined sensor faults occur. To enhance the quality of fault diagnosis and to gain insight into the causes of sensor faults, this paper has introduced the ICSF approach, which is able to identify combined sensor faults occurring simultaneously within individual sensors using classification models based on LSTM networks. To validate the ICSF approach, a validation test has been conducted using acceleration measurements from a real-world SHM system installed on a pedestrian bridge in Greece. The results demonstrate the effectiveness of the classification models in identifying various combined sensor faults, such as bias, drift, gain, precision degradation, and outliers. However, the classification models have faced challenges in identifying outliers due to the imbalanced training data caused by the intermittent patterns of outliers in continuous signals. Since outliers can be identified and removed through signal pre-processing, the significance of identifying outliers within the FD process is deemed low. Overall, the proposed ICSF approach represents an advancement in improving fault diagnosis in SHM systems. Future research directions include decentralizing the approach, exploring imbalanced-data-handling methods, and enhancing transparency through explainable artificial intelligence interfaces.

Acknowledgments

The authors gratefully acknowledge the support offered by the German Research Foundation (DFG) under grants SM 281/17-1 and SM 281/20-1 as well as by the German Federal Ministry for Digital and Transport (BMDV) within the mFUND program under grant 19FS2013B. The financial support is gratefully acknowledged. Any opinions, findings, conclusions, or recommendations expressed in this paper are those of the authors and do not necessarily reflect the views of DFG or BMDV.

References

- [1] Law, K. H., Smarsly, K., and Wang, Y. (2014). Sensor Data Management Technologies for Infrastructure Asset Management. In: Wang, M. L., Lynch, J. P. & Sohn, H. (Eds.). *Sensor Technologies for Civil Infrastructures*. Pp. 3-32. Sawston, UK: Woodhead Publishing, Ltd.
- [2] Smarsly, K. and Law, K. H. (2014). Decentralized fault detection and isolation in wireless structural health monitoring systems using analytical redundancy. *Advances in Engineering Software*, 73(2014), pp. 1-10.
- [3] Patton, R. J. (1990). Fault detection and diagnosis in aerospace systems using analytical redundancy. *Computing and Control Engineering Journal*, 2(3), pp. 127-136.
- [4] Dragos, K. and Smarsly, K. (2016). Distributed adaptive diagnosis of sensor faults using structural response data. *Smart Materials and Structures*, 25(10), 105019.
- [5] Dervilis, N., Antoniadou, I., Barthorpe, R. J., Cross, E. J., and Worden, K. (2016). Robust methods for outlier detection and regression for SHM applications. *International Journal of Sustainable Materials and Structural Systems*, 2(1/2), pp. 3-26.
- [6] Kullaa, J. (2007). Sensor fault identification and correction in vibration-based multichannel structural health monitoring. *Structural Health Monitoring 2007: Quantification, Validation, and Implementation*, 1(2007), pp. 606-613.
- [7] Steiner, M., Legatiuk, D., and Smarsly, K. (2019). A support vector regression-based approach towards decentralized fault diagnosis in wireless structural health monitoring systems. In: *Proceedings of the 12th International Workshop on Structural Health Monitoring: Enabling Intelligent Life-Cycle Health Management for Industry Internet of Things*. Stanford, USA. September 10, 2019.
- [8] Deng, Y., Zhao, Y., Ju, H., Yi, T.H., and Li, A. (2024). Abnormal data detection for structural health monitoring: State-of-the-art review. *Developments in the Built Environment*, 17(2024), 100337.
- [9] Yu, C.-B., Hu, J.-J., Li, R., Deng, S.-H., and Yang, R. M. (2014). Node Fault Diagnosis in WSN Based on RS and SVM. In: *Proceedings of the 2014 International Conference on Wireless Communication and Sensor Network*. Wuhan, China. December 13, 2014.
- [10] Fritz, H., Peralta Abadía, J. J., Legatiuk, D., Steiner, M., Dragos, K., and Smarsly, K. (2022). Fault diagnosis in structural health monitoring systems using signal processing and machine learning techniques. In: Cury, A., Ribeiro, D., Ubertini, F., and Todd, M. D. (Eds.), *Structural Health Monitoring Based on Data Science Techniques*. Pp. 143-164. Cham, Switzerland: Springer.
- [11] Oncescu, A. M. and Cicirello, A. (2022). A self-supervised classification algorithm for sensor fault identification for robust structural health monitoring. In: *Proceedings of the 10th European Workshop on Structural Health Monitoring*. Palermo, Italy, July 4, 2022.
- [12] Li, L., Luo, H., Qi, H., and Wang, F. (2023b). Sensor Fault Diagnosis Method of Bridge Monitoring System Based on FS-LSTM. In: Yang, Y. (Eds). *Advances in Frontier Research on Engineering Structures*. Lecture Notes in Civil Engineering. pp. 487-501. Singapore: Springer.
- [13] Cheng, X., Wang, D., Xu, C., and Li, J. (2021). A sensor fault identification method based on adaptive particle swarm optimization support vector machine. In: *Proceedings of the 6th International Conference on Maintenance Engineering*. Tianjin, China. October 20, 2021.
- [14] Abboush, M., Knieke, C., and Rausch, A. (2023). Intelligent identification of simultaneous faults of automotive software systems under noisy and imbalanced data using ensemble LSTM and random forest. *IEEE Access*, 11(2023), pp. 140022-140040.
- [15] Al-Zuriqat, T., Chillón Geck, C., Dragos, K., and Smarsly, K. (2023). Adaptive Fault Diagnosis for Simultaneous Sensor Faults in Structural Health Monitoring Systems. *Infrastructures*, 8(3), 39.
- [16] Smarsly, K., Dragos, K., and Kölzer, T. (2022). Sensor-integrated digital twins for wireless structural health monitoring of civil infrastructure [Sensorintegrierte digitale Zwillinge für das automatisierte Monitoring von Infrastrukturbauelementen]. *Bautechnik*, 99(6), pp. 471-476.
- [17] The MathWorks, Inc. (2022). MATLAB version: 9.13.0 (R2022b), Natick, Massachusetts. Available at: <https://www.mathworks.com> [Accessed January 26, 2024].