

156 | 1965

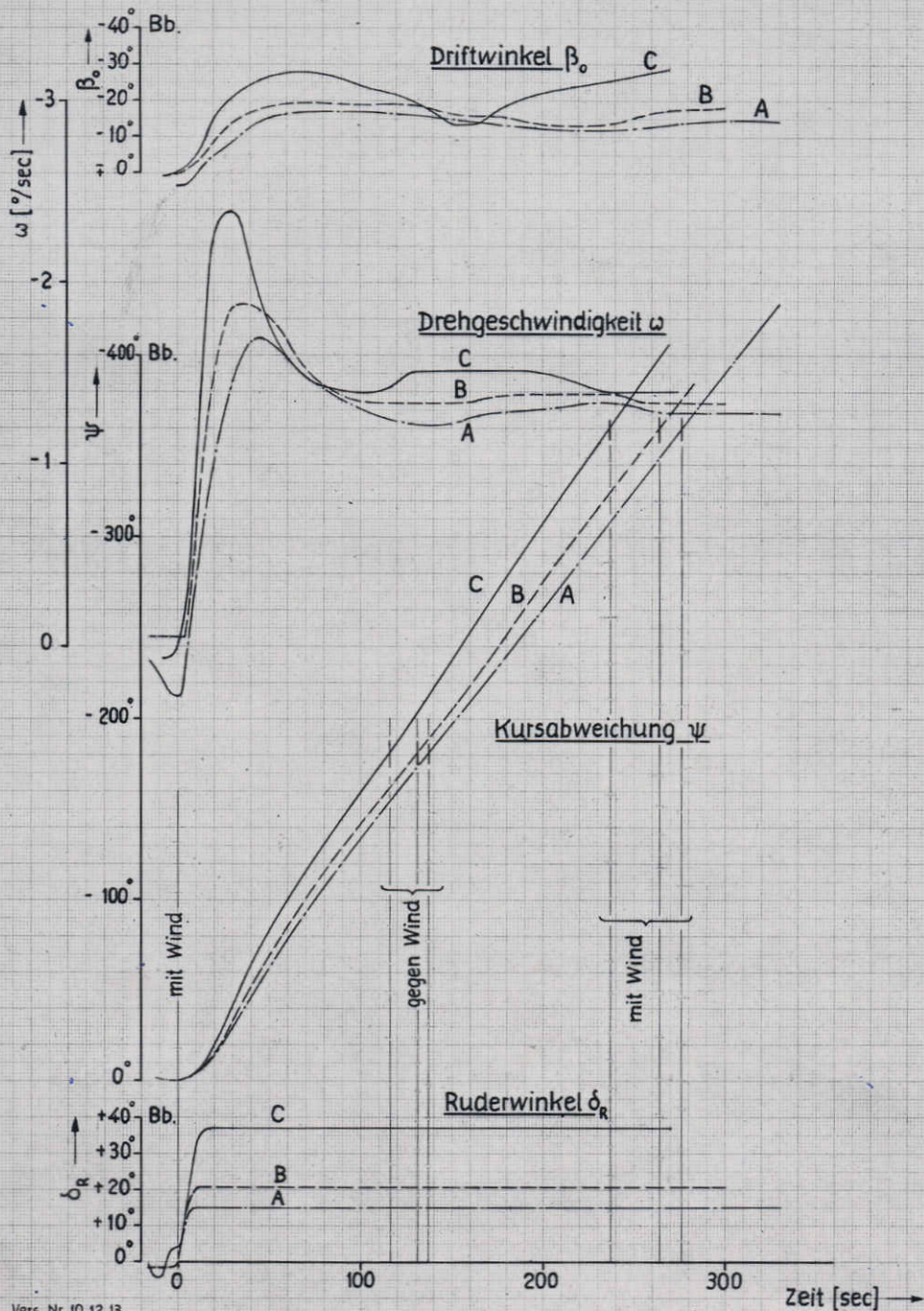
SCHRIFTENREIHE SCHIFFBAU

K. Suhrbier

Ruderkraftmessungen und Manövrierversuche auf dem Forschungsschiff "Meteor"

TUHH

Technische Universität Hamburg-Harburg



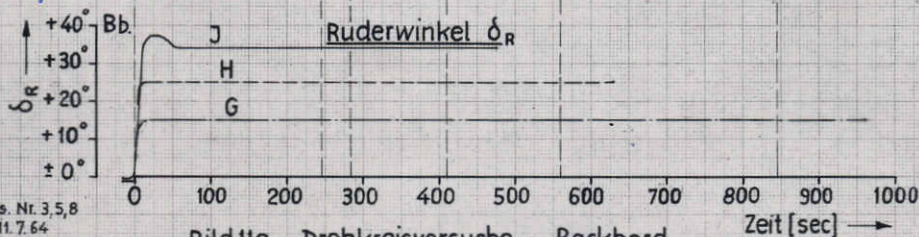
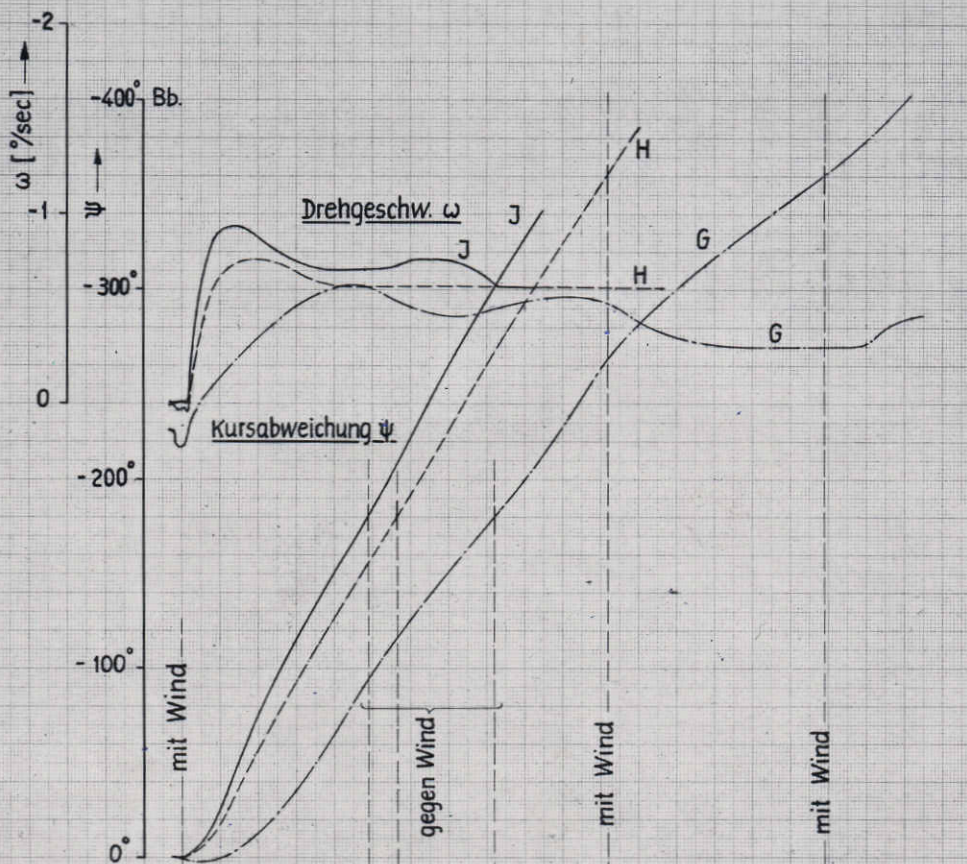
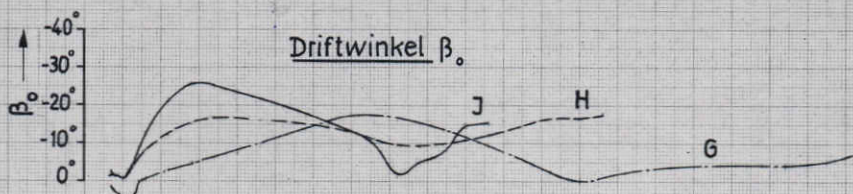
Vers. Nr. 10, 12, 13

11.7.64

a

Bild 10a Drehkreisversuche - Backbord

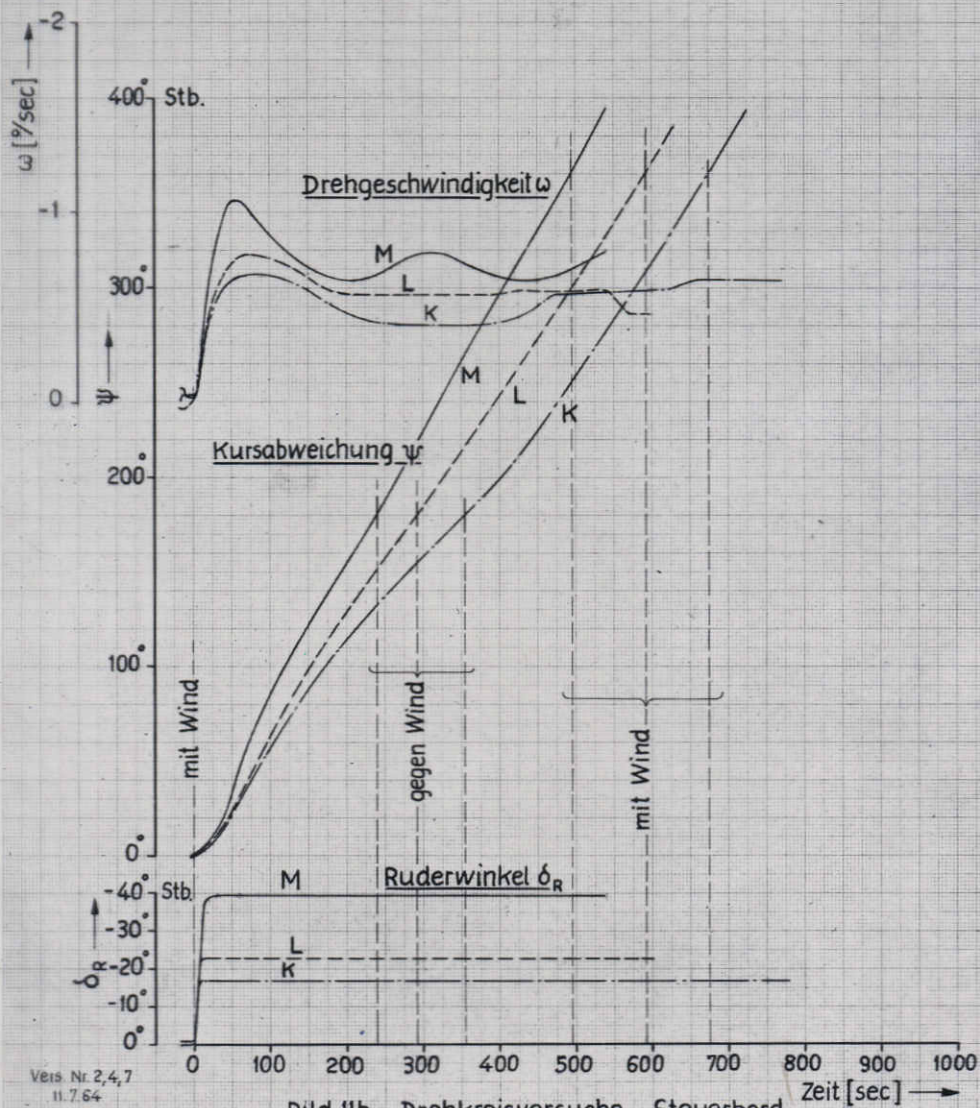
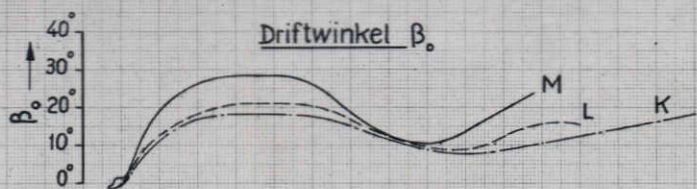
$v_0 \approx 10 \text{ Kn}$, Wind Bft. 5



Vers. Nr. 3,5,8
11.7.64
a

Bild 11a Drehkreisversuche - Backbord

$v_0 \approx 4$ Kn, Wind: Bft. 4



Vers. Nr. 2,4,7
11.7.64
a

Bild IIb Drehkreisversuche - Steuerbord
 $v_0 \approx 4 \text{ Kn}$, Wind: Bft. 4

Zeit [sec] →

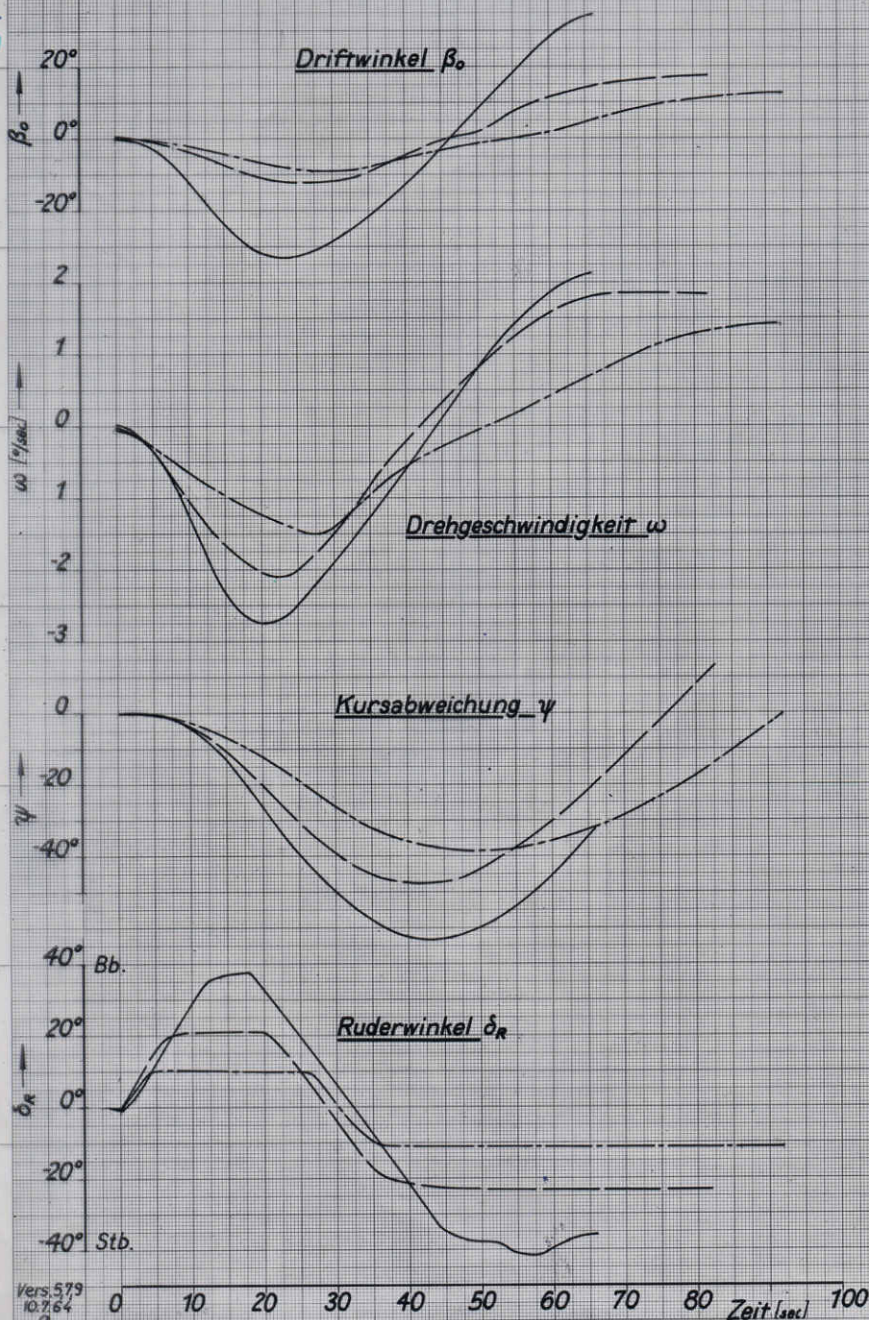
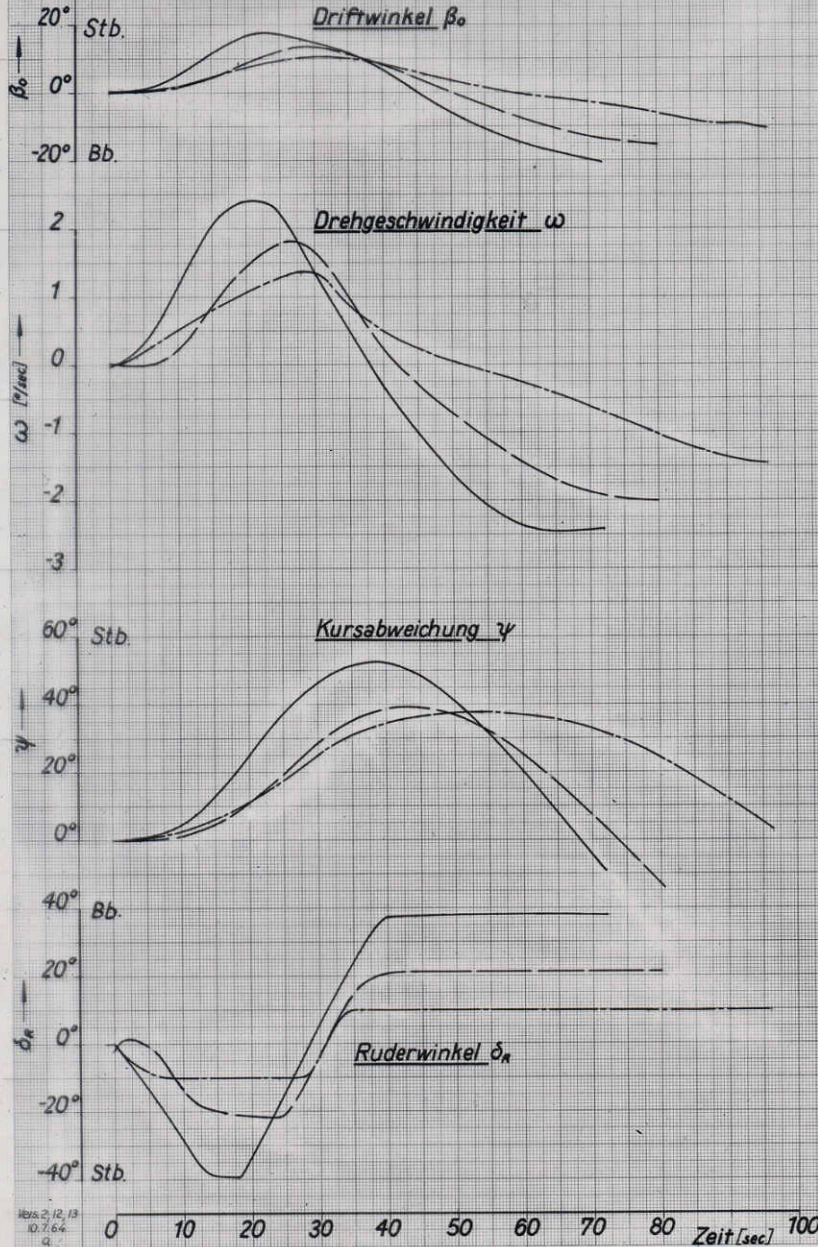


Bild 15b Dreh - Stütz - Versuche Bb./Stb. - Anfahrt gegen Wind (Bfl. 5/6)



Mess. 2/12, 13
10.7.64
q.

Bild 16a Dreh-Stütz-Versuche Stb./Bb. - Anfahrt mit Wind (Bft. 5/6)

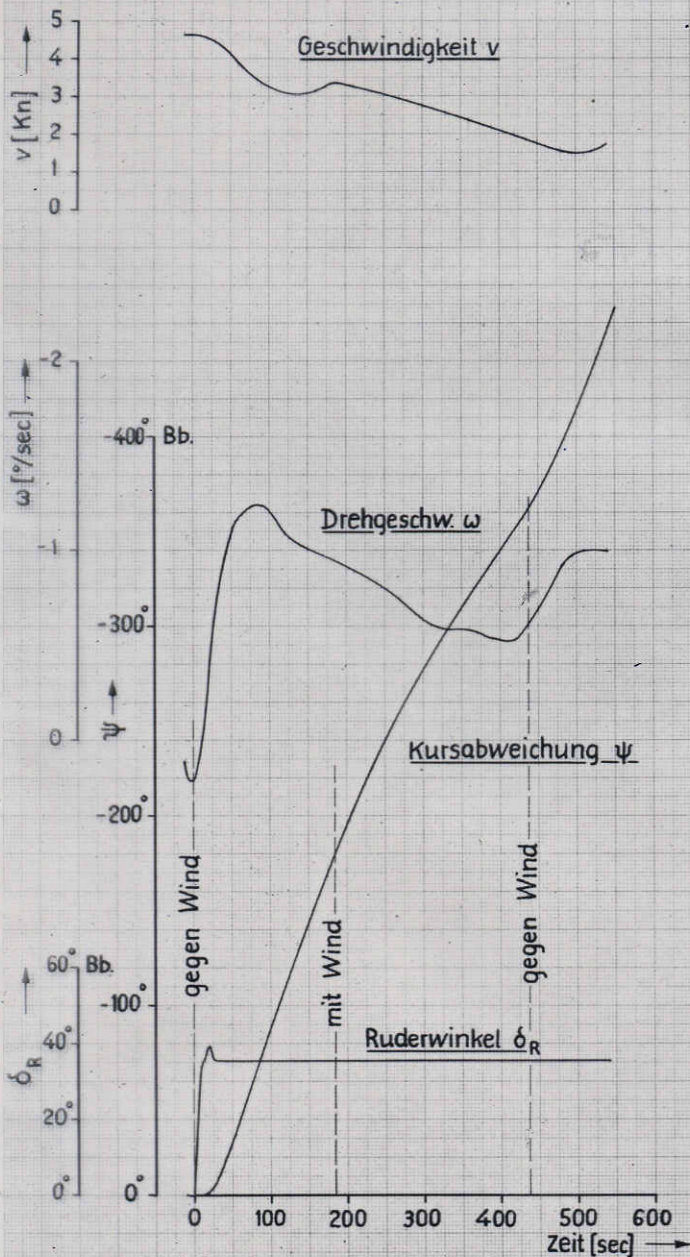


Bild 19a Drehen mit Aktivrudder nach Bb.

Vers. Nr. 16
12.7.64

$V_0 \approx 4,6 \text{ Kn}$, $\delta_R \approx 36^\circ \text{ Bb.}$

$T_{AR(0)} \approx 4,2 \text{ t}$; $n_p \approx 0$

Wind: Bft. 5/6

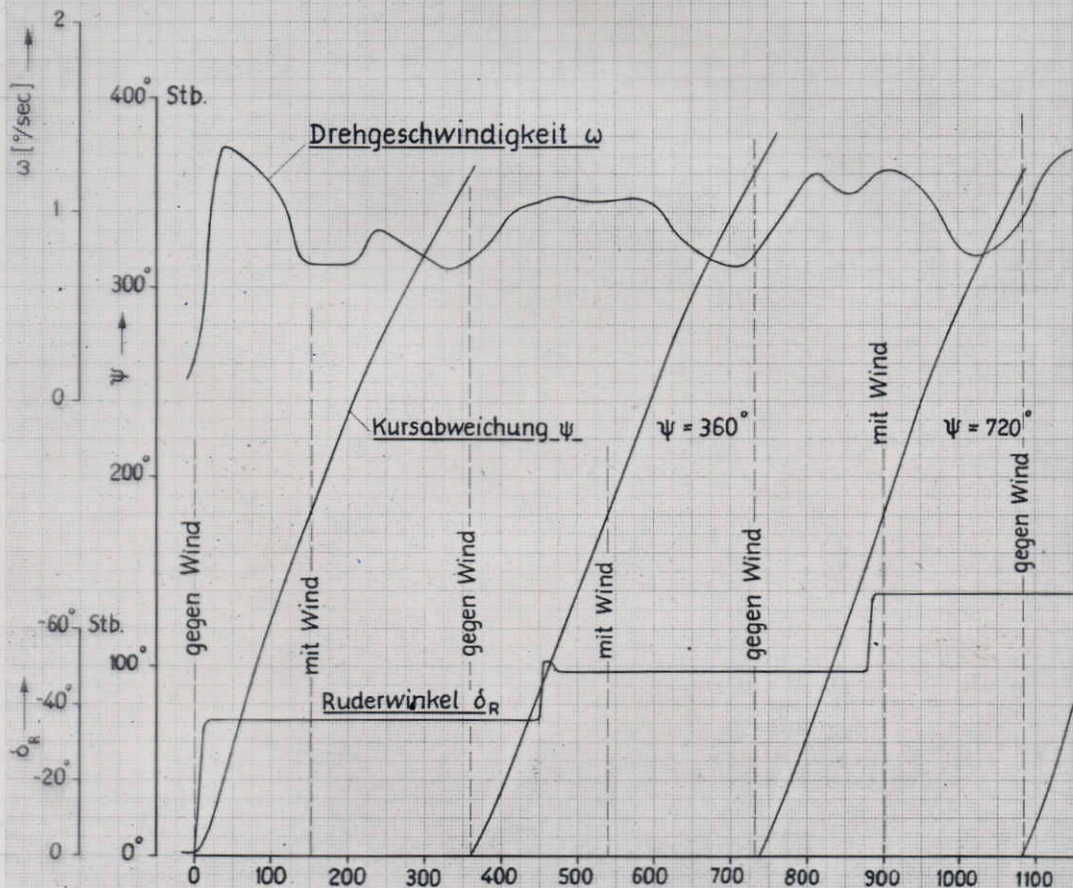
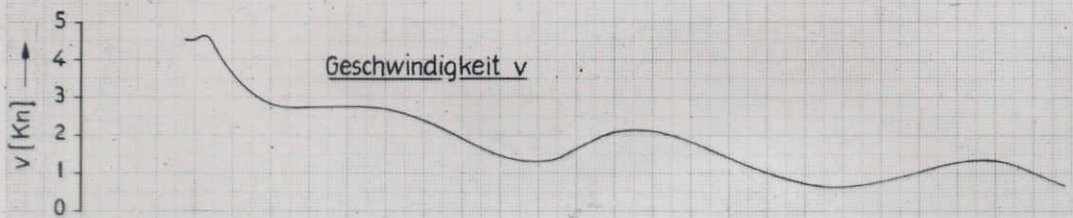
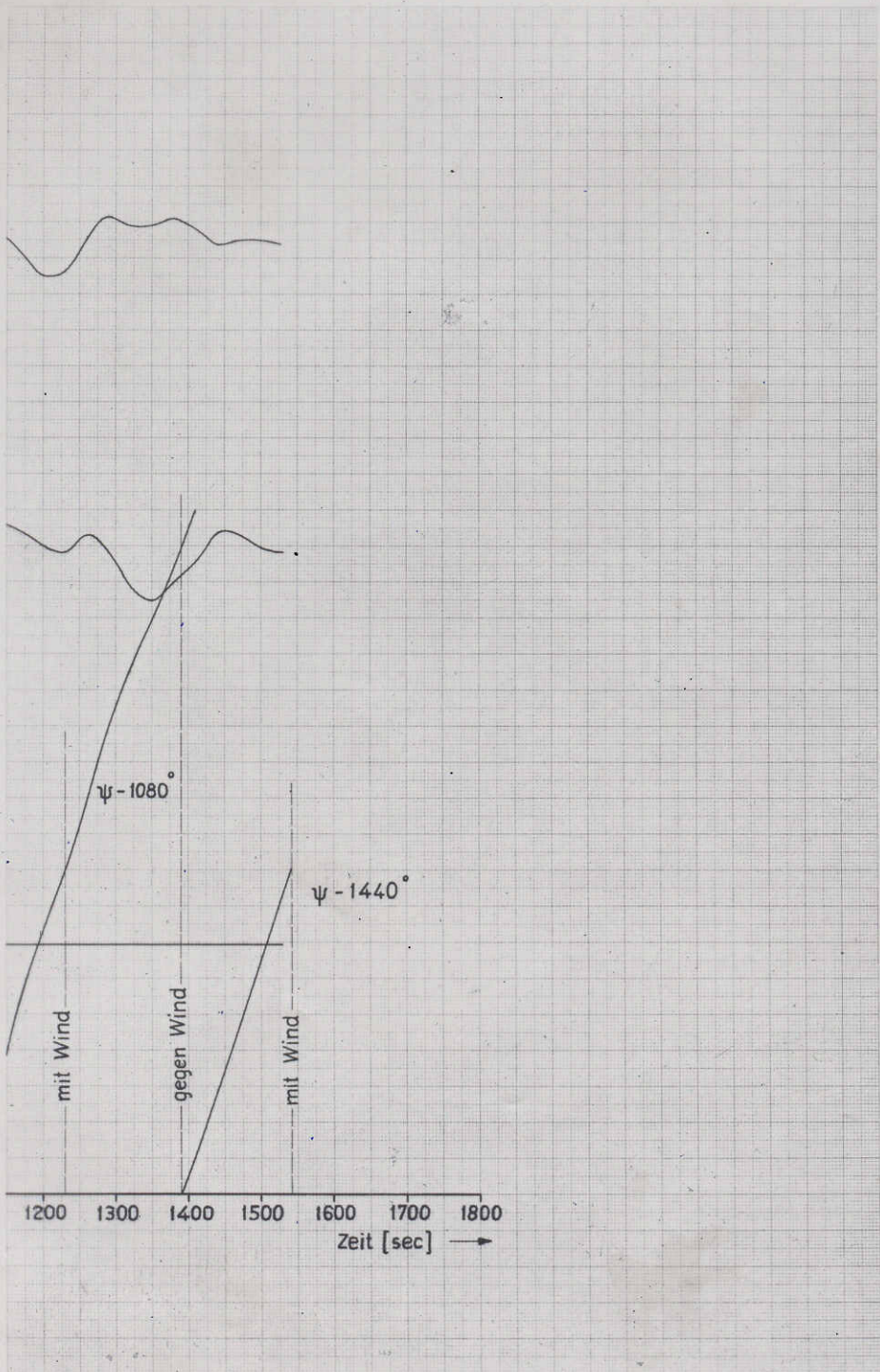


Bild 19b Drehen mit Aktivrudder nach Stb.

$v_0 \approx 4,5 \text{ Kn}$; $\delta_R \approx 36^\circ, 49^\circ, 69^\circ \text{ Stb.}$

$T_{AR(0)} \approx 4,2 \text{ t}$; $n_P = 0$

Wind: Bft. 5



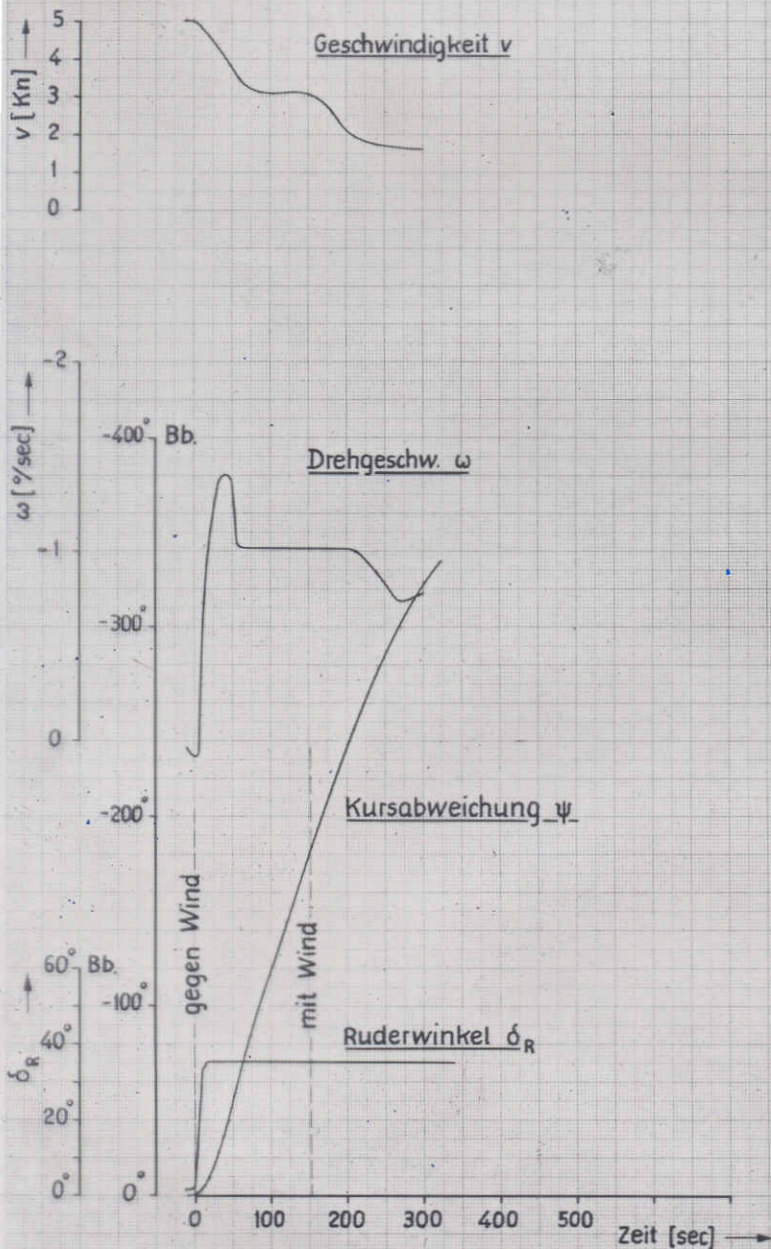


Bild 20a Drehen mit Aktivrudder u. Bugstrahlrudder $\bar{I} u \bar{u}$ nach Bb.

Vers. Nr. 18
12.7.64

$V_0 \approx 5 \text{ Kn}$, $\delta_R \approx 35^\circ \text{ Bb}$.
 $T_{AR(0)} \approx 4,2t$, $T_{BSR(0)} \approx 2,5t$, $n_p = 0$
 Wind: Bft. 5

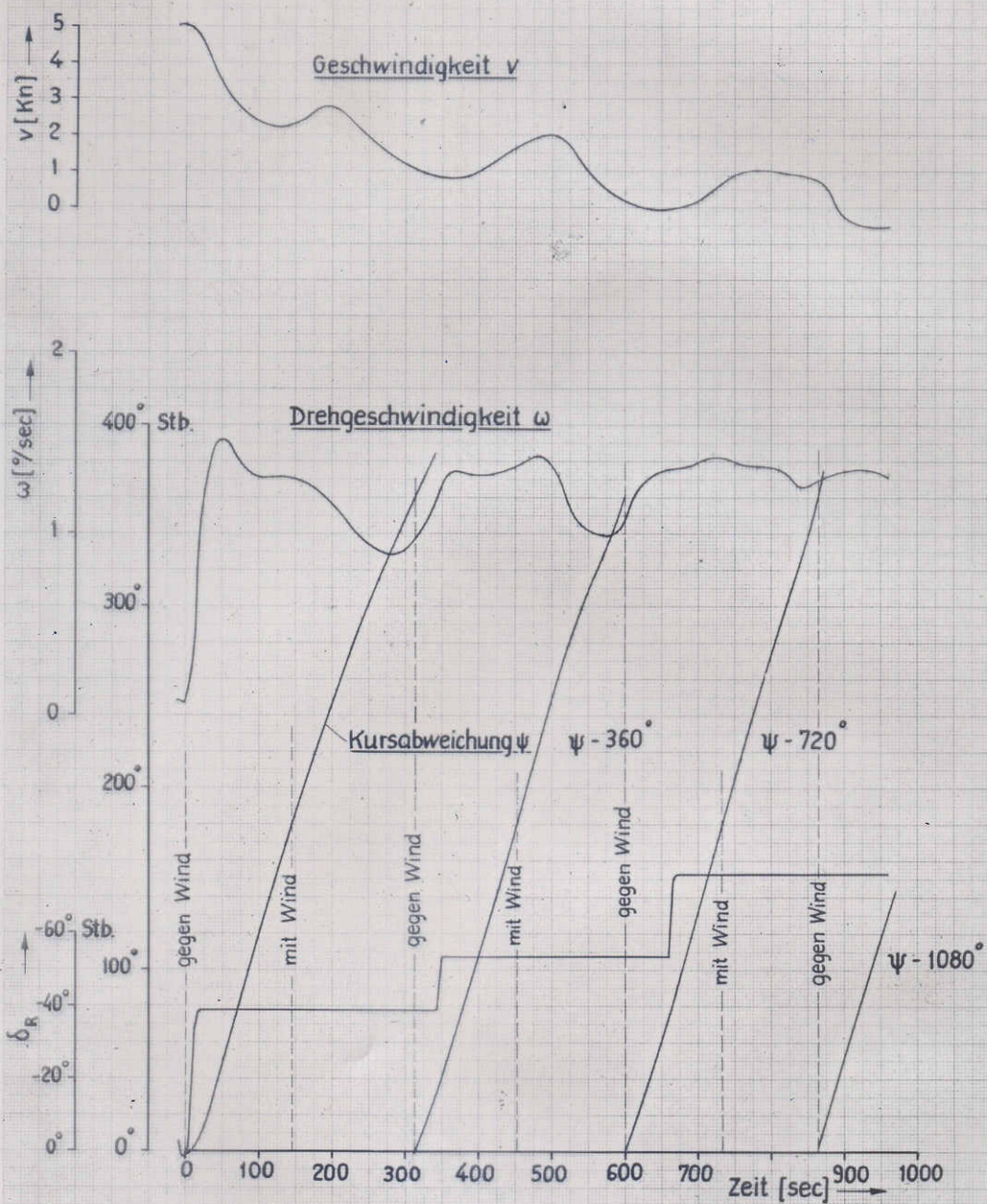


Bild 20b Drehen mit Aktivrudder u. Bugstrahlrudder I u. II nach Stb.
 $v_0 \approx 5,1 \text{ Kn}$, $\delta_R \approx 39^\circ, 54^\circ, 76^\circ \text{ Stb.}$
 $T_{AR(0)} \approx 4,2t$; $T_{BSR(0)} \approx 2,5t$
 Wind: Bft. 5

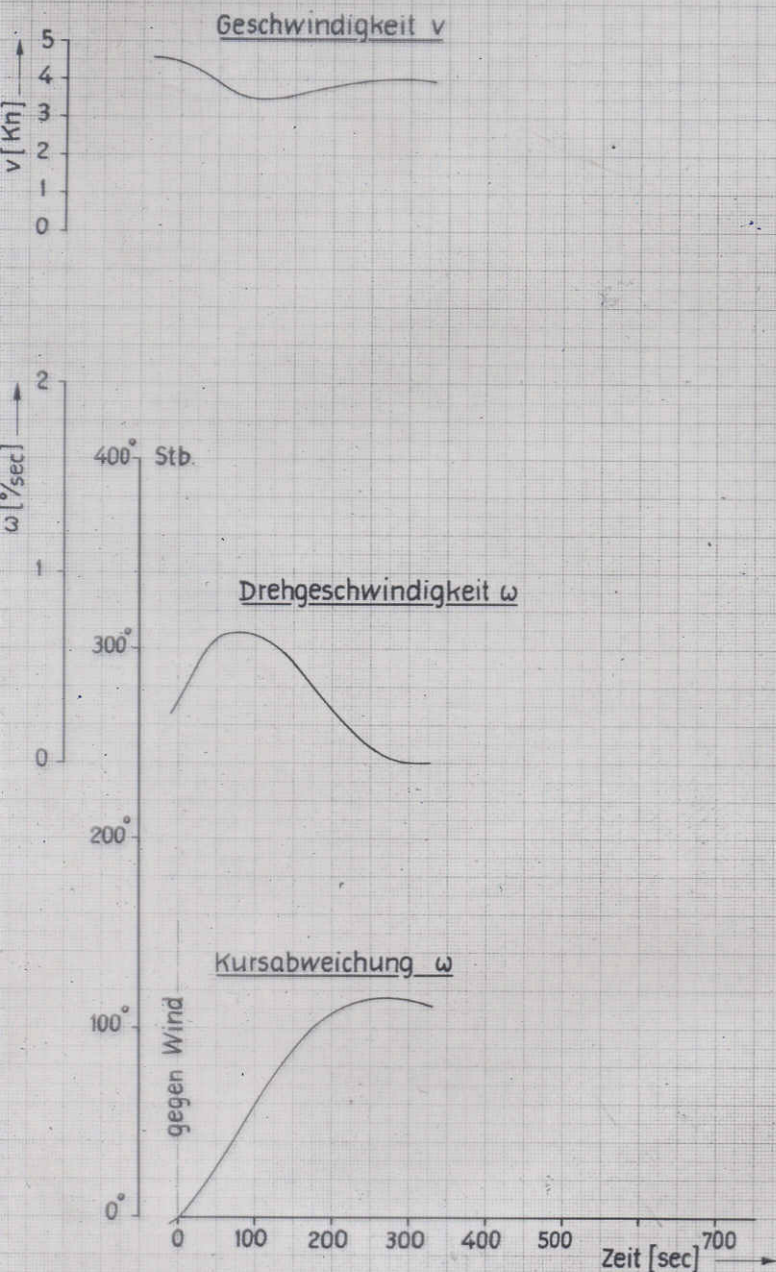
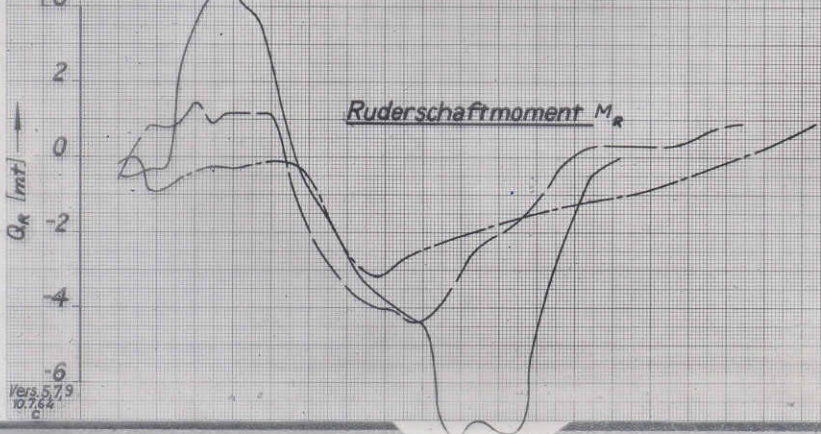
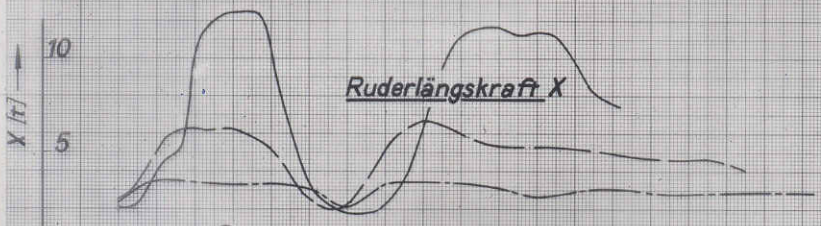
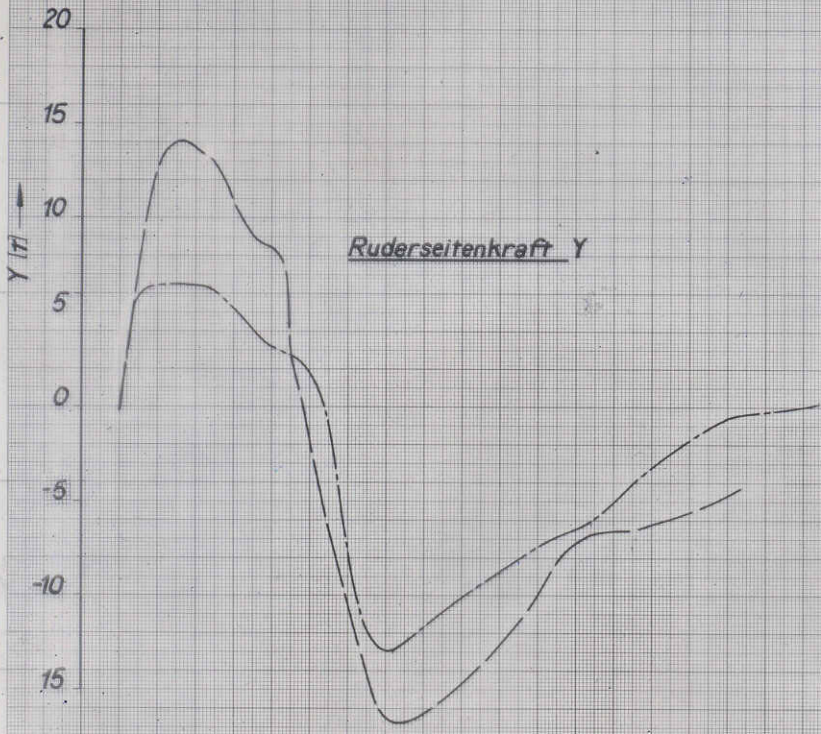


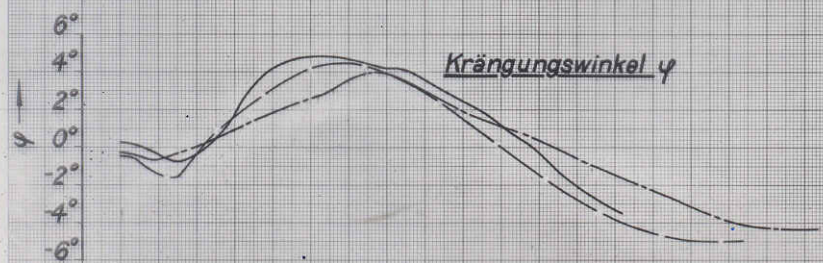
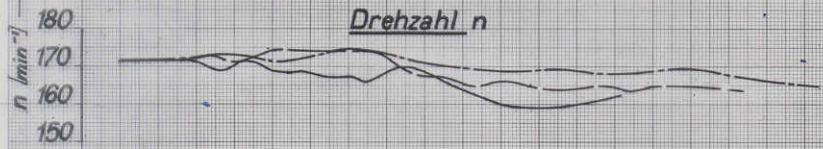
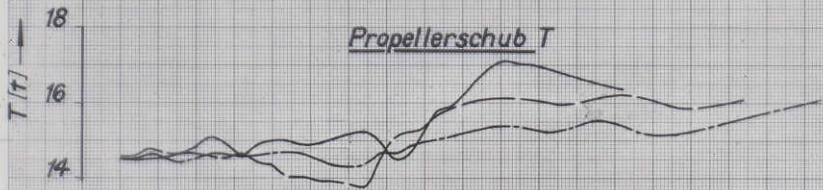
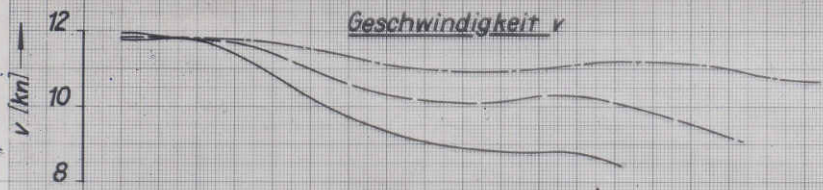
Bild 21 Drehen mit Bugstrahlruder \bar{u} nach Stb.

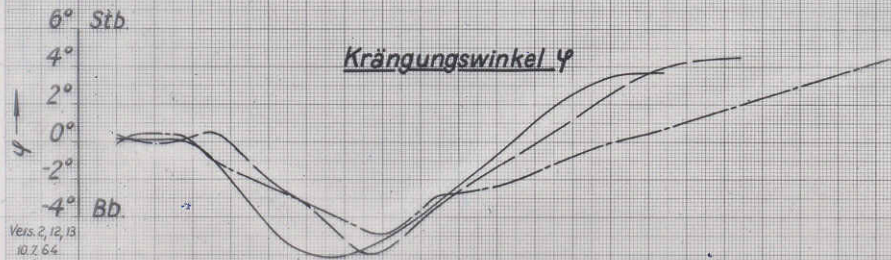
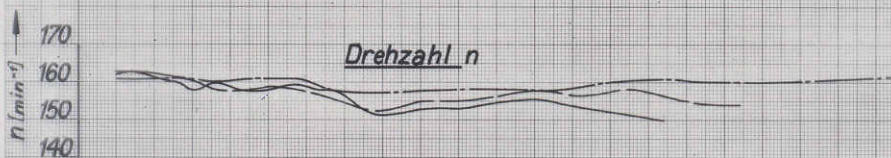
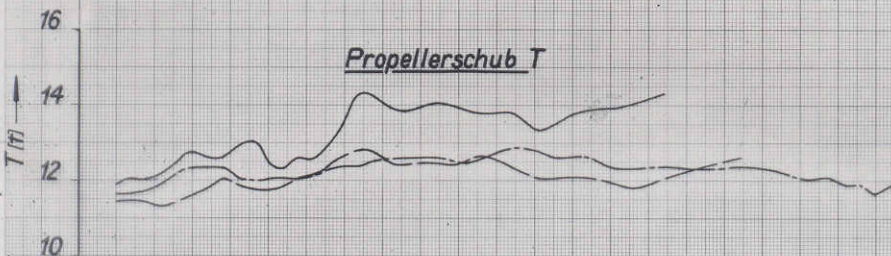
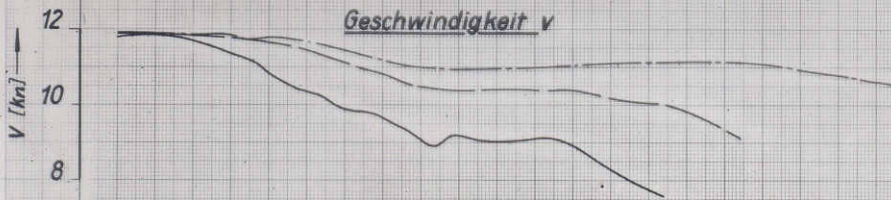
$$v_0 \approx 4,6 \text{ Kn}, \quad \delta_R = 0^\circ$$

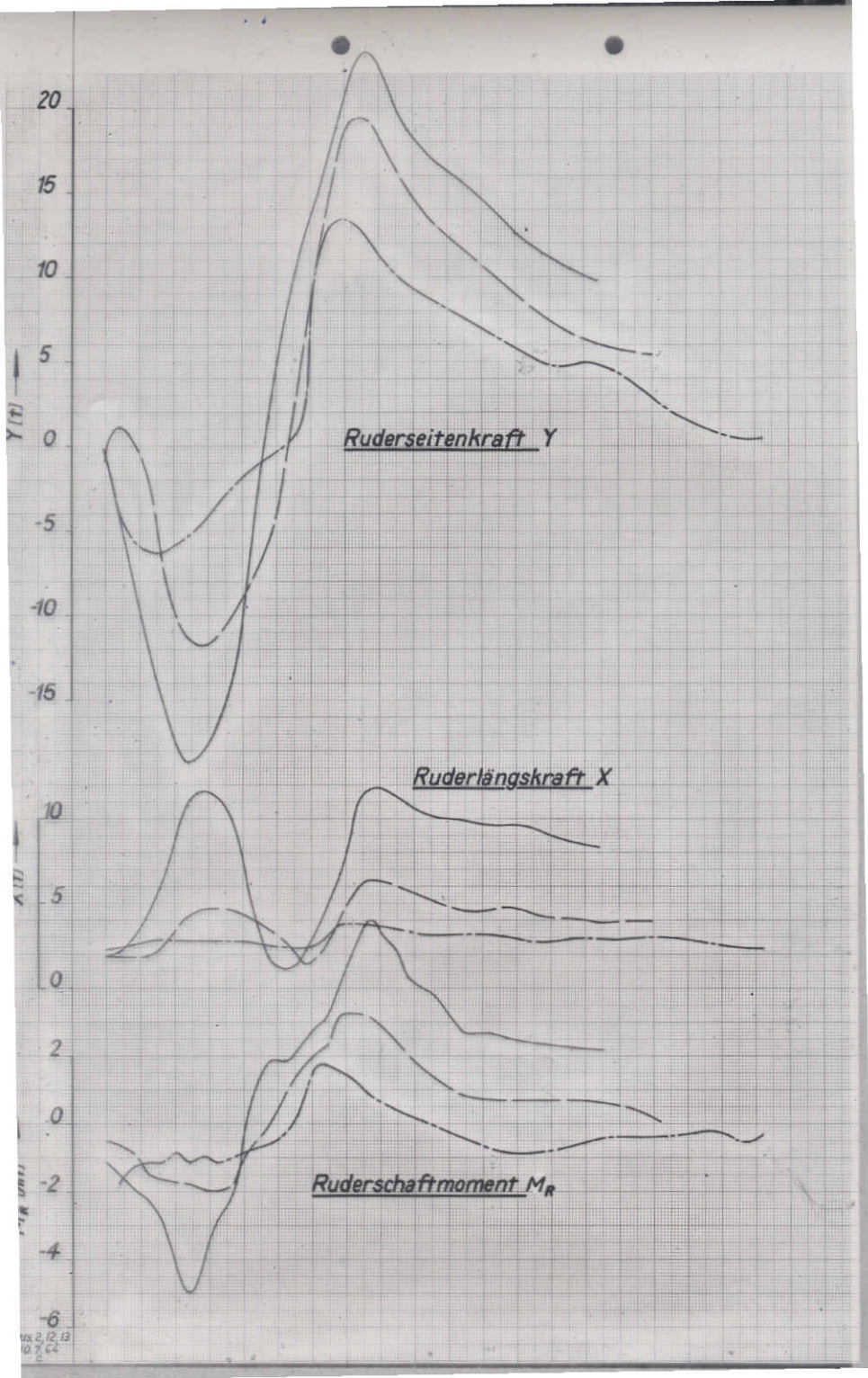
$$T_{BSR(0)} \approx 2,5 t_i, \quad n_p = 70 \text{ U/min}$$

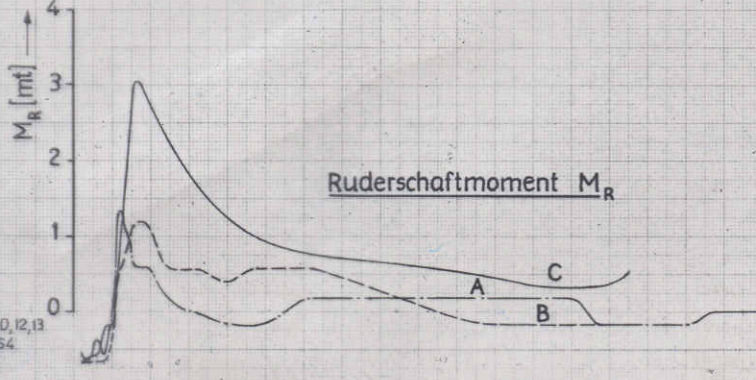
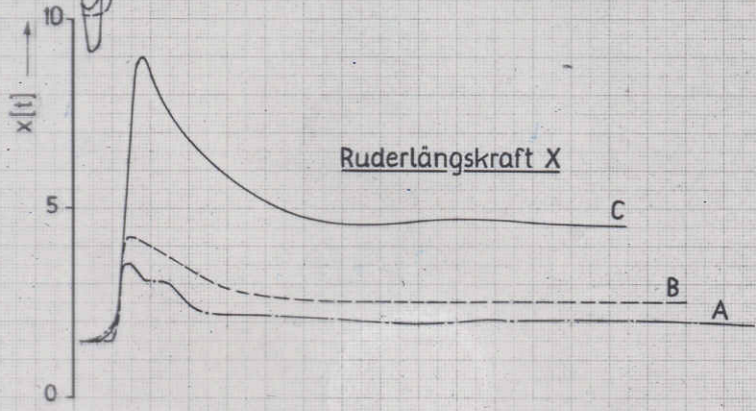
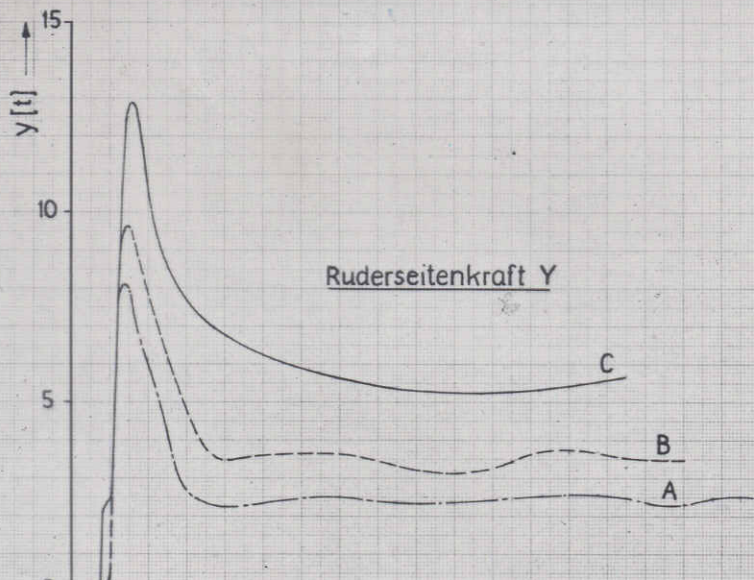
Wind: Bft. 5



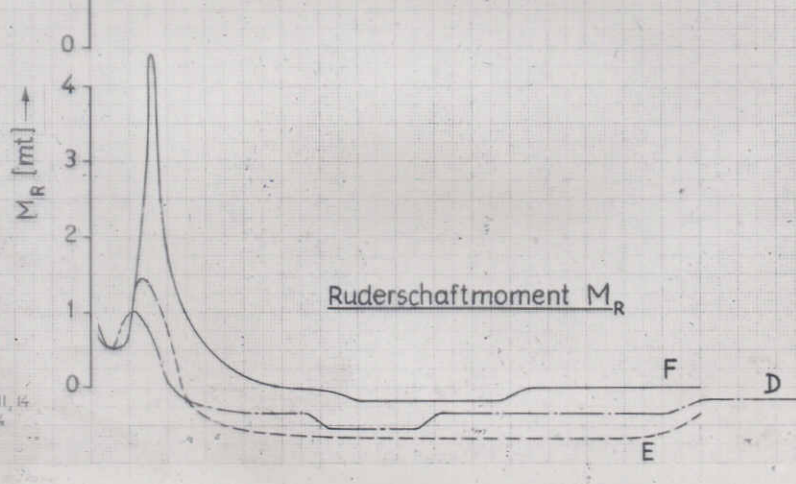
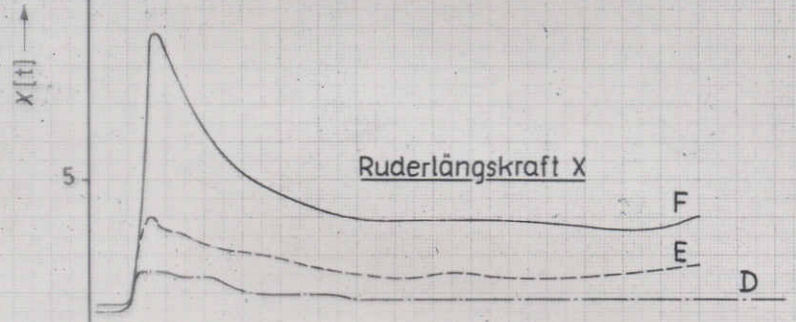
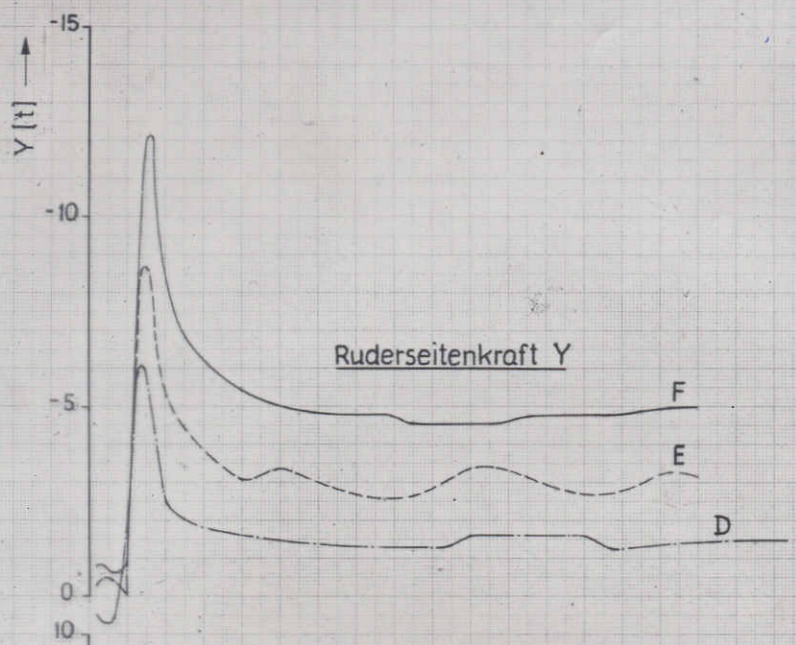


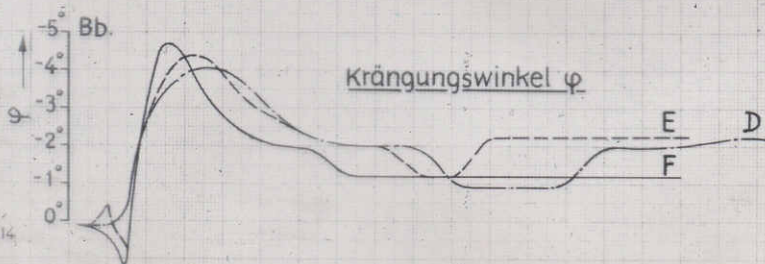
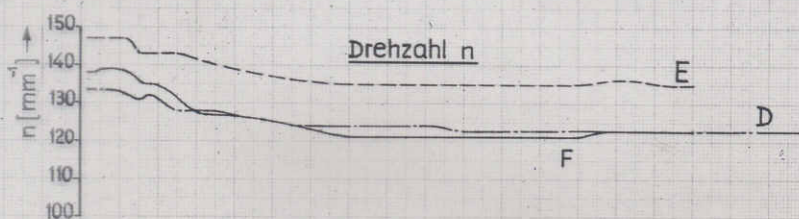
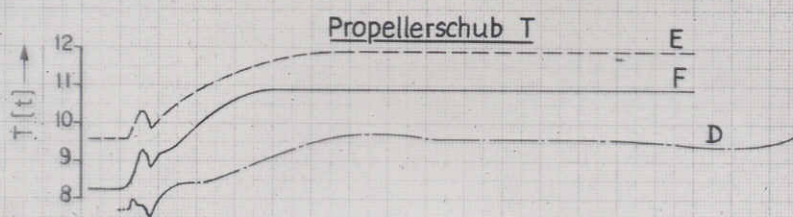
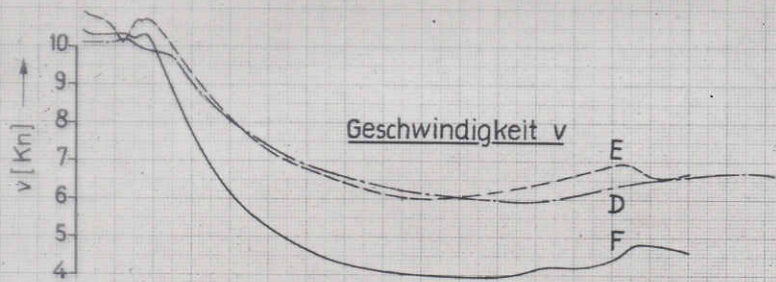


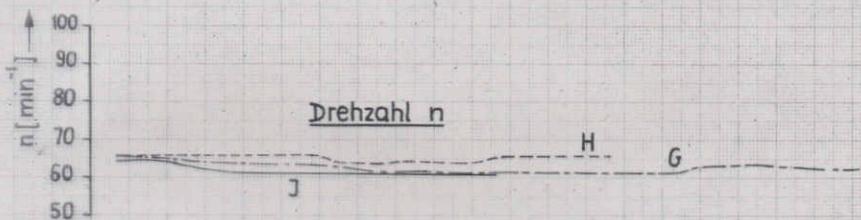
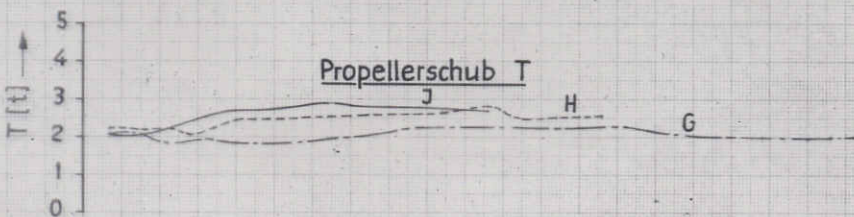
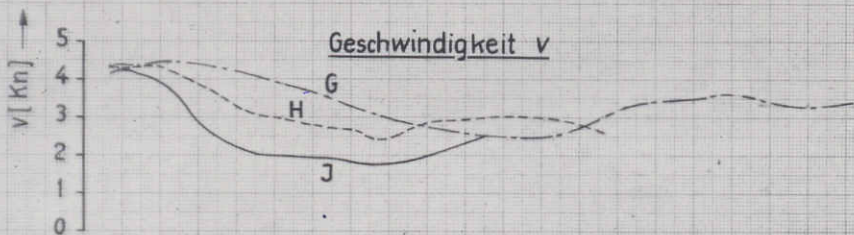


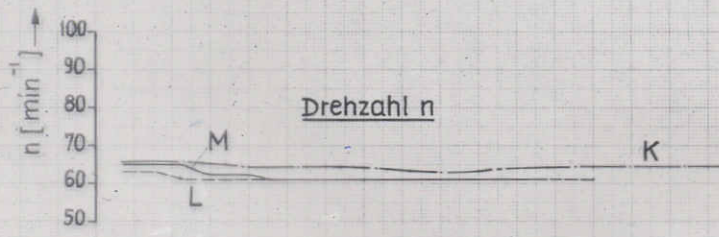
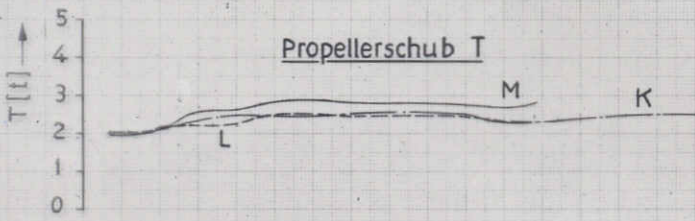
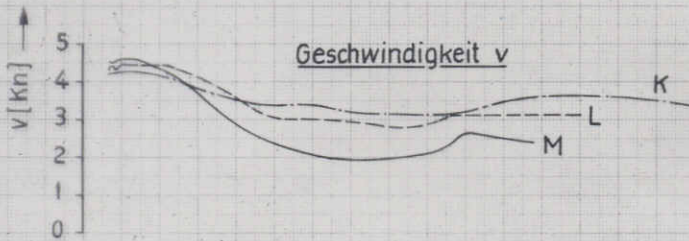


Vers. Nr. 10, 12, 13
11.7.64

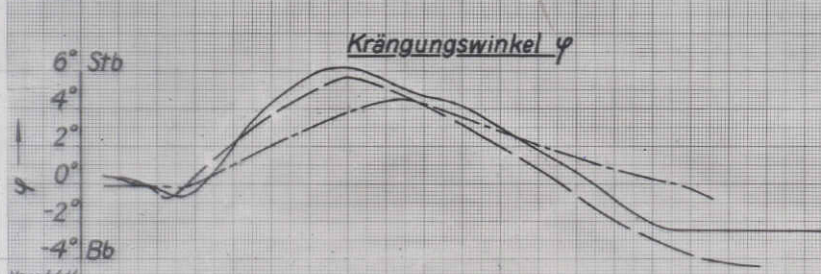
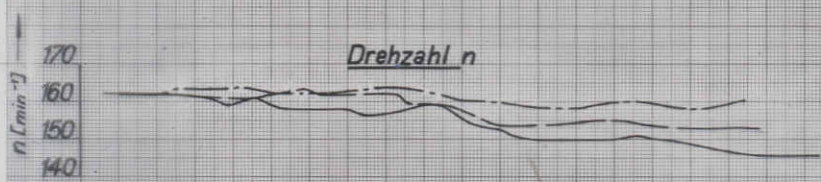
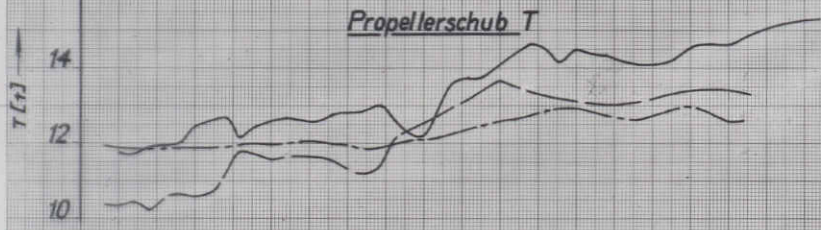
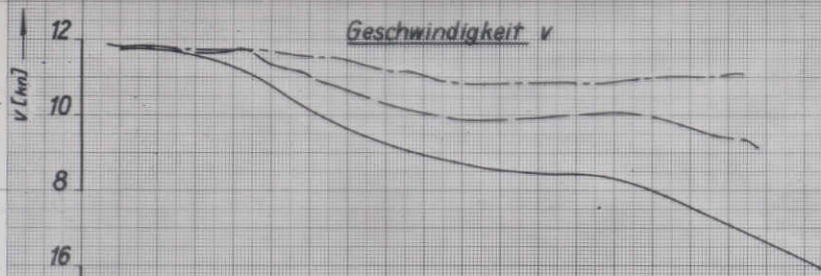




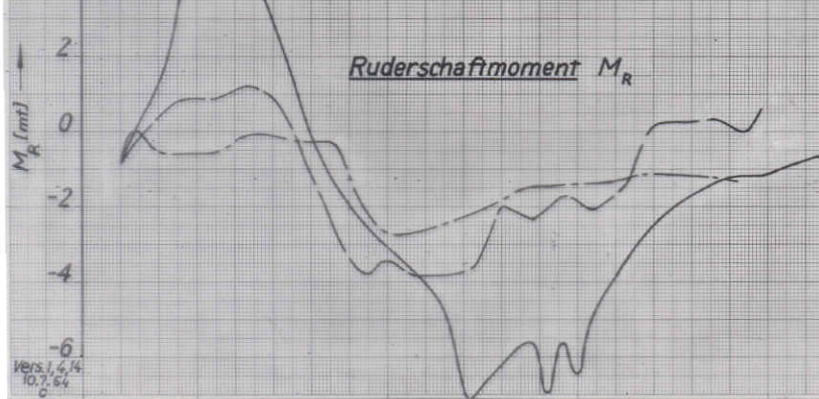
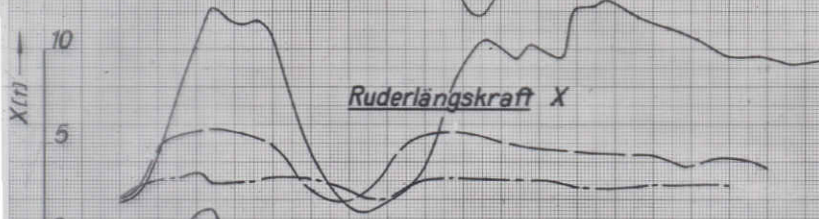
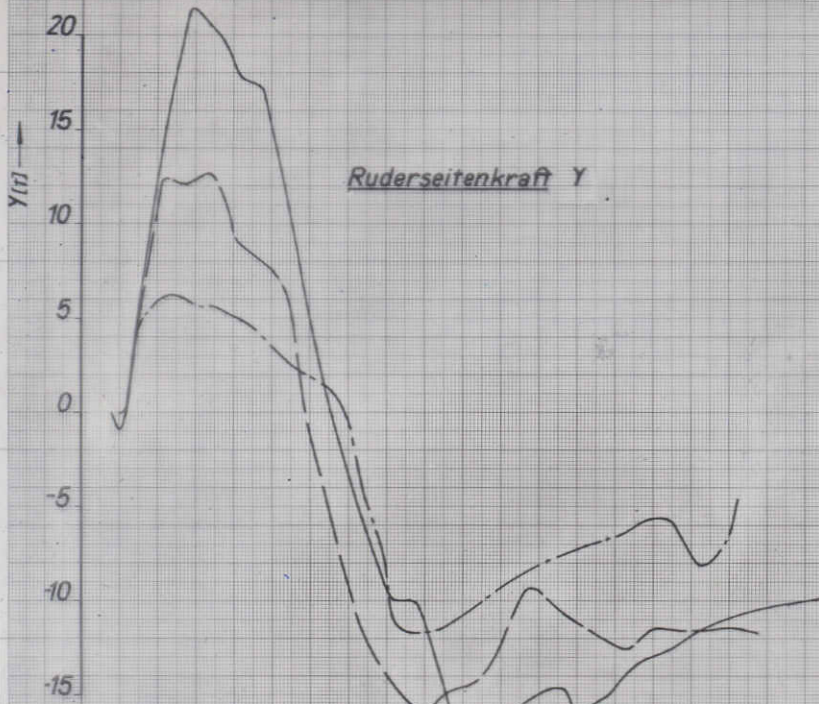




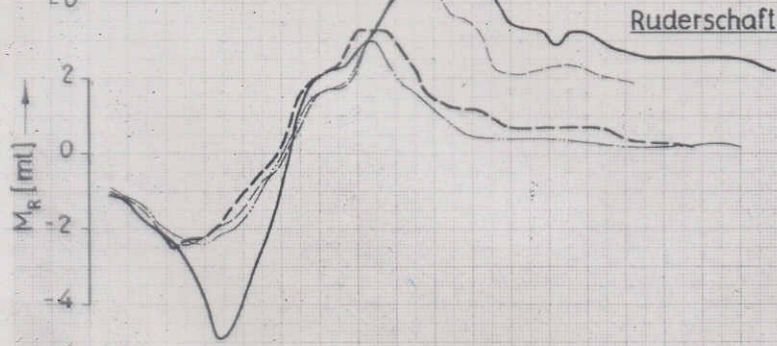
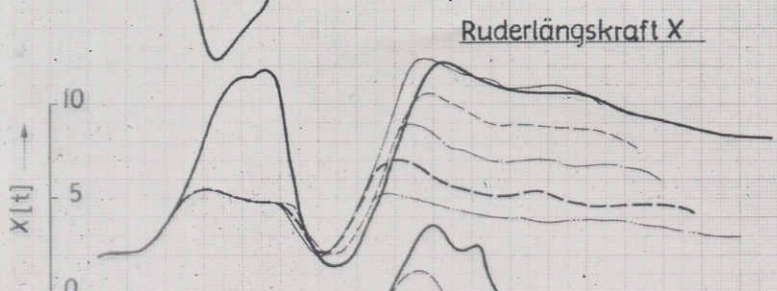
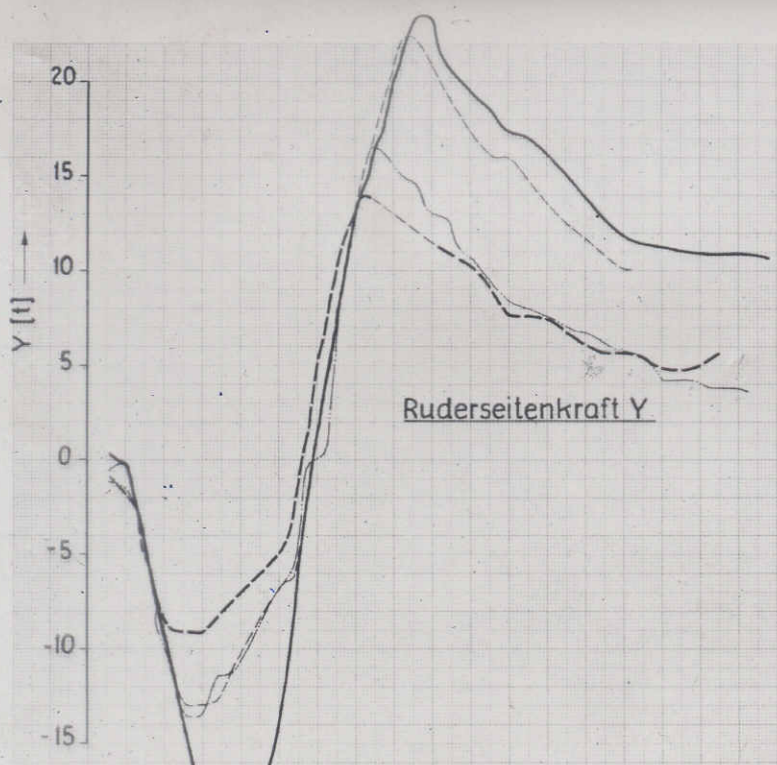
φ



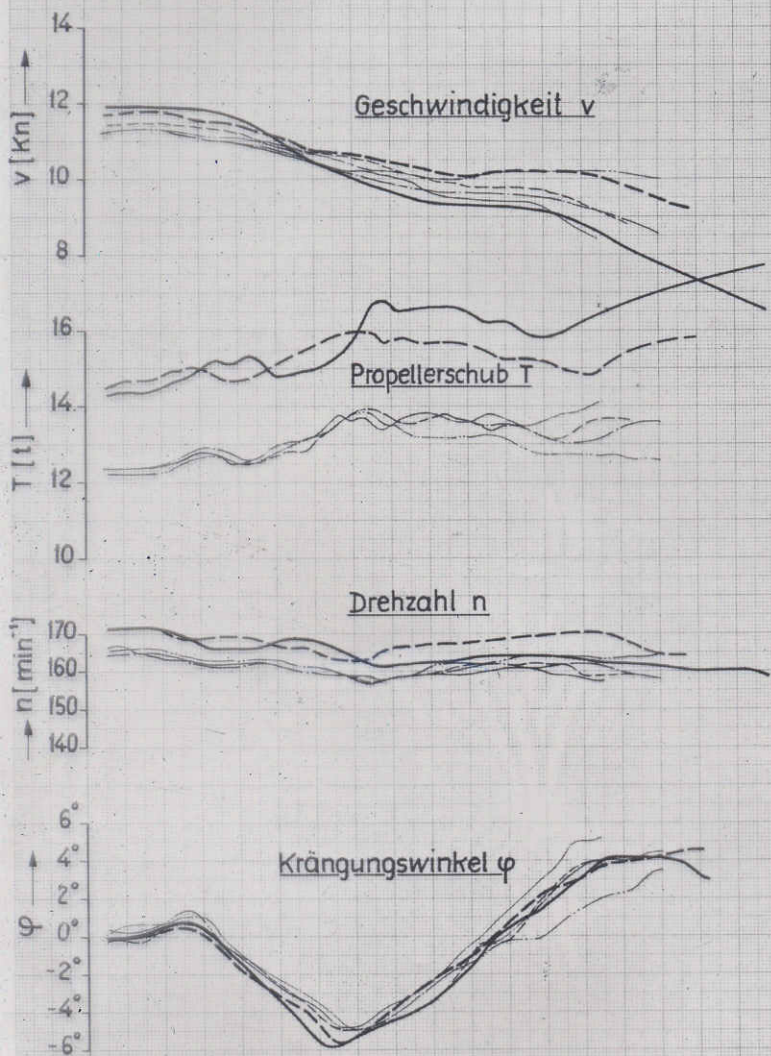
Vers. 1,44
10.7.64
b



Vers. 1, 6, 14
10, 7, 64
c

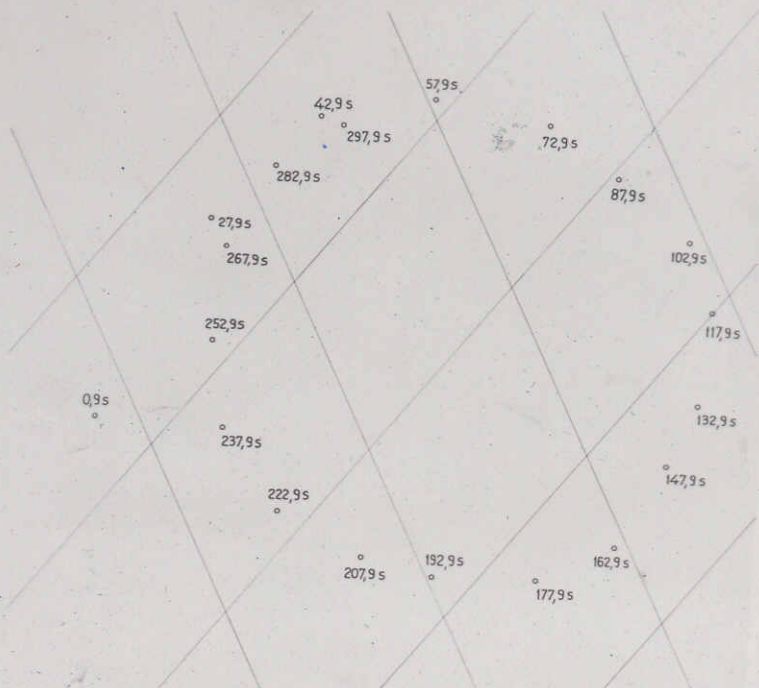


Vers.
1,2,3,4/12.7.64
8,11/10.7.64
C

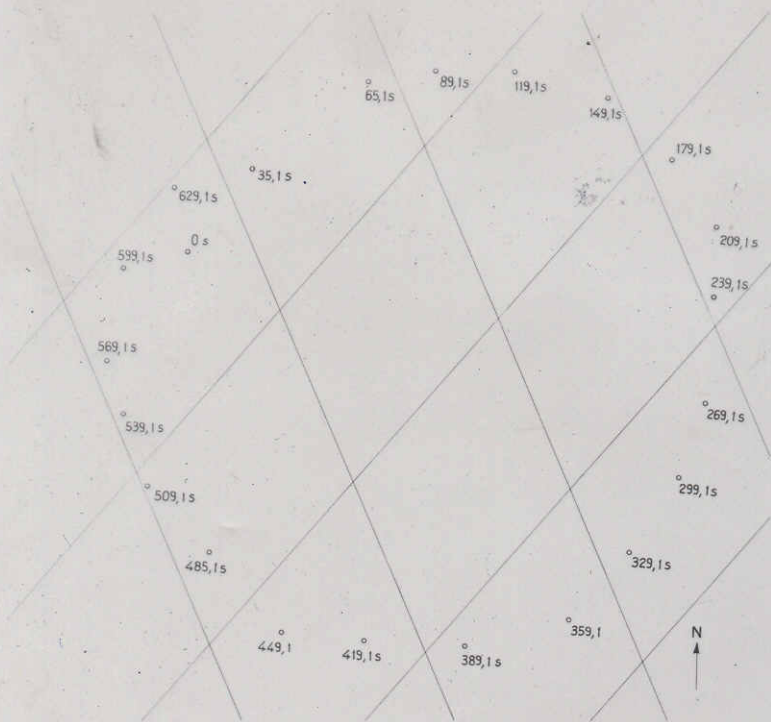


Vers. 1,2,3,4/ 12.7.64
 8,11/ 10.7.64
 b

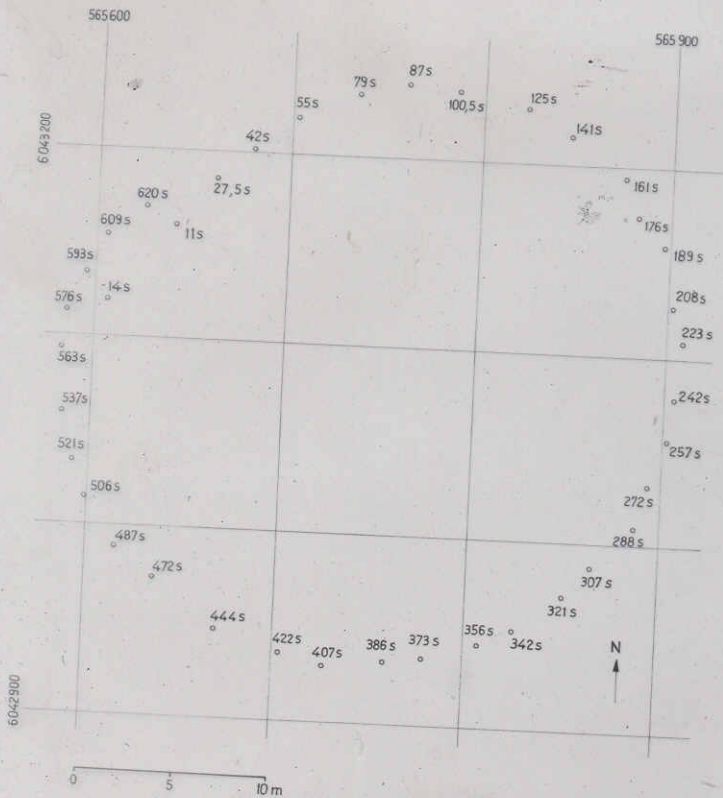
Decca - Koordinaten
Drehkreis nach Decca - Messung



Decca - Koordinaten
Drehkreis nach Decca - Messung



Gauß - Krüger - Koordinaten
Drehkreis nach Doppelwinkel - Messung

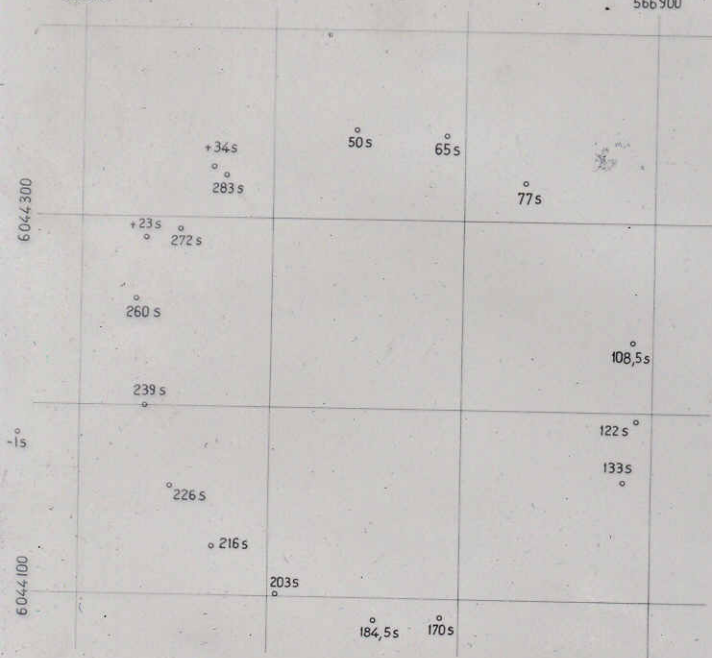


Drehkreis (L)

Gauß - Krüger - Koordinaten
Drehkreis nach Doppelwinkel - Messung

566600

566900



0 5 10 m

Drehkreis (E)

Bild Vergleich der Drehkreise nach Decca - Ortung
und Doppelwinkel - Messung.