

==== Shimadzu LabSolutions Analysis Report =====

Sample Name : HD_Gly_131024_N_800_5
 Sample ID :
 Data Filename : HD_Gly_131024_N_800_5.lcd
 Method Filename : SFB_B_ST1_0.8 mL_45 min_Start.lcm
 Batch Filename : 20241014_DN_HD_N_800_131024_postrun.lcb
 Vial # : 1-30 Sample Type : Unknown
 Injection Volume : 10 uL
 Date Acquired : 10/13/2024 8:57:59 PM Acquired by : System Administrator
 Date Processed : 10/14/2024 3:18:08 PM Processed by : System Administrator

<Method>

<<Header>>

Generated : 4/24/2024 3:47:23 PM
 GeneratedBy : System Administrator
 Modified : 10/13/2024 3:52:17 PM
 ModifiedBy : System Administrator

<<System Controller>>

Model : SCL-40
 Event1 : Off
 Event2 : Off
 Sample Load Timing : Off

<<Data Acquisition>>

LC Stop Time : 45.00 min
 Detector A Name : Detector A
 Detector A Sampling Frequency : 2 Hz
 Detector A Start Time : 0.00 min
 Detector A End Time : 45.00 min

<<Pump>>

Mode : Isocratic flow
 Pump A : LC-40D
 Pump A Flow/Pressure : Flow
 Pump System A Flow : 0.8000 mL/min
 Pump System A Flow Slope : 20.00 min
 Pump A PressMax : 90 bar
 Pump A PressMin : 0 bar
 Pump A Valve Model : Switching Valve
 Pump A Valve : B
 Pump A Compressibility Setting : On
 Pump A Mobile Phase Settings : 0.45 /GPa

<<Autosampler>>

Autosampler Model : SIL-40
 Enable Autosampler : Use
 Rinse Type : External only
 Specify Plate : Off
 Rinsing Volume : 500 uL
 Cut Off Loop : Off
 Specify Needle Stroke : Off
 Rinsing Speed : 35 uL/sec
 Sampling Speed : 5.0 uL/sec
 Rinse Port R0 Purge Time : 2.0 min
 Measuring Line Purge Time : 5.0 min
 Rinse Mode : Before and after aspiration
 Rinse Dip Time : 0 sec
 Measuring Line Purge Volume : 100 uL
 Air Gap Volume : Off
 Rinse Port Liquid : R0

<<Sample Pretreatment>>

Mode : Standard

<<Oven>>

Oven Model : CTO-40C
 Enable Oven : Use
 Oven Temperature : 25 C
 Maximum Temperature : 105 C

Ready Check : On
 Wait Time : 5 min
 Ready Range : 1.0 C
 Fan Speed : Auto
 Cooler Mode : Auto
 Valve 1/L : FCV-0206
 Valve 1/L Position : 1: Column1

<<Detector A>>

Model : RID-20A
 Mode : Analytical
 Polarity : +
 Use Cell Temp. : Use
 Cell Temp. : 40.0 C
 Response : 1.5 sec
 Intensity Unit : Volt
 Auxiliary Range : 1.0E-3 RIU/V
 Recorder Range : 100.00 uRIU/FS
 Synchronize with Auxiliary : Off
 Purge Time : 20 min

<<LC Time Program>>

Time	Module	Command	Value	Comment
0.01	RID-20A(DET.A)	Zero		
45.00	Controller	Stop		

<<Peak Integration>>

<Detector A>

Channel : Ch1
 Width : 5 sec
 Slope : 2000 uV/min
 Drift : 0 uV/min
 T.DBL : 1000 min
 Max Slices : 0
 Peak Top Detection : Normal
 RT Compensation Mode : Fine
 Min.Area/Height is made effective in Manual Integration : Off
 Min.Area/Height : 1000 counts
 Calculated by : Area
 Noise Calculation Settings : Noise Data : Current Data
 Calculation Method : ASTM
 Range : Whole Range
 Interval : 0.5 min
 Include the Peak Detected Range : Off
 Detection Limit Coefficient : 3.3
 Quantitative Limit Coefficient : 10.0
 Drift Calculation Settings : 0.000 - 15.000 min

<<Integration Time Program(Method)>>

<Detector A>

Channel : Ch1
 Time Program : None

<<Integration Time Program(Data)>>

<Detector A>

Channel	Time Program	No. Enable	Time(min)	Command	Value
		1 [Yes]	9.946	Move BL	10.403
		2 [Yes]	10.403	Move BL	10.202
		3 [Yes]	10.196	Move BL	10.403
		4 [Yes]	10.403	Move BL	10.444
		5 [Yes]	10.438	Move BL	10.444
		6 [Yes]	10.446	Move BL	10.685
		7 [Yes]	10.679	Move BL	10.847
		8 [Yes]	10.846	Move BL	10.927
		9 [Yes]	10.444	Insert Peak	10.444

<<Identification>>

<Detector A>

Window/Band : Window
 Window : 5.00 %
 Identification Method : Absolute
 Peak Selection : Closest Peak
 Display not identified peaks : Not display

<<Quantitative>>

<Detector A>

Quantitative Method : External Standard
 Calculated by : Area

# of Calibration Levels	: 14
Curve Fit Type	: Linear
Zero	: Not Forced
Weighting Method	: None
X Axis of Calib. Curve	: Conc.
Units	: mol/L
Format of Conc.	: Decimals
Format of Conc. Figure	: 5
Group Type	: Not Used
Check %Dev(Standard)	: No
Check Accuracy[%](Standard)	: No
Check %Dev(Control)	: No
Check Accuracy[%](Control)	: No
Check %Dev(Additive)	: No
Check Accuracy[%](Additive)	: No
Check %Dev(Unknown)	: No
Check Accuracy[%](Unknown)	: No
Check Quantitation Limit	: No
Check Detect Limit	: No

<<Compound Table>>

<Detector A>

```

Detector A-
ID#           : 1
Name          : Methanol
Type          : Target
Channel       : Ch1
Retention Time: 14.400 min
Retention Index: 0
Concentration : [1]=3.016738      [2]=1.049395      [3]=0.4943277
                [4]=0.2893701    [5]=0.1127578    [6]=0.06136267
                [7]=0.01619725    [8]=3.016738      [9]=1.049395
                [10]=0.4943277    [11]=0.2893701   [12]=0.1127578
                [13]=0.06136267   [14]=0.01619725

```

Peak Selection : Default(Closest Peak)

Calculated by : Default(Area)

Curve Fit Type : Default(Linear)

Zero : Default(Not Forced)

Weight : Default(None)

Window/Band : Default(Window)

Spiked : 0.000

1st Coefficient : 4.720087e+005

Intersection : 1.693726e+003

Correction Factor : 1.000000

Standard concentration factor : 1.000000

ID# : 2

Name : Glycerin

Type : Target

Channel : Ch1

Retention Time : 10.000 min

Retention Index : 0

Concentration : [1]=2.958375 [2]=1.078646 [3]=0.5353454
[4]=0.3066948 [5]=0.114594 [6]=0.05901699
[7]=0.0117174 [8]=2.958375 [9]=1.078646
[10]=0.5353454 [11]=0.3066948 [12]=0.114594
[13]=0.05901699 [14]=0.0117174

Peak Selection : Default(Closest Peak)

Calculated by : Default(Area)

Curve Fit Type : Default(Linear)

Zero : Default(Not Forced)

Weight : Default(None)

Window/Band : Default(Window)

Spiked : 0.000

1st Coefficient : 7.326784e+006

Intersection : 2.573900e+005

Correction Factor : 1.000000

Standard concentration factor : 1.000000

ID# : 3

Name : n-Propanol

```

Name      : m1rop
Type      : Target

```

Channel : Ch1

Retention Time : 20.000 min

Retention Index : 0

Retention Index	Concentration	[1]=3.02526	[2]=1.092217	[3]=0.5139845
		[4]=0.3105323	[5]=0.09785473	[6]=0.04497364
		[7]=0.01087275	[8]=3.02526	[9]=1.092217
		[10]=0.5139845	[11]=0.3105323	[12]=0.09785473
		[13]=0.04497364	[14]=0.01087275	

Peak Selection : Default(Closest Peak)
 Calculated by : Default(Area)
 Curve Fit Type : Default(Linear)
 Zero : Default(Not Forced)
 Weight : Default(None)
 Window/Band : Default(Window)
 Spiked : 0.000
 1st Coefficient : 3.955755e+006
 Intersection : -2.585461e+004
 Correction Factor : 1.000000
 Standard concentration factor : 1.000000

ID# : 4
 Name : 1,2 Propandiol
 Type : Target
 Channel : Ch1
 Retention Time : 12.400 min
 Retention Index : 0
 Concentration : [1]=2.977546 [2]=1.016412 [3]=0.5030017
 [4]=0.3027638 [5]=0.1023958 [6]=0.04970167
 [7]=0.01157971 [8]=2.977546 [9]=1.016412
 [10]=0.5030017 [11]=0.3027638 [12]=0.1023958
 [13]=0.04970167 [14]=0.01157971

Peak Selection : Default(Closest Peak)
 Calculated by : Default(Area)
 Curve Fit Type : Default(Linear)
 Zero : Default(Not Forced)
 Weight : Default(None)
 Window/Band : Default(Window)
 Spiked : 0.000
 1st Coefficient : 5.771075e+006
 Intersection : 6.007717e+004
 Correction Factor : 1.000000
 Standard concentration factor : 1.000000

ID# : 5
 Name : 1,3 Propandiol
 Type : Target
 Channel : Ch1
 Retention Time : 13.000 min
 Retention Index : 0
 Concentration : [1]=2.976375 [2]=0.9968958 [3]=0.4990984
 [4]=0.2900131 [5]=0.10734 [6]=0.04944145
 [7]=0.0100184 [8]=2.976375 [9]=0.9968958
 [10]=0.4990984 [11]=0.2900131 [12]=0.10734
 [13]=0.04944145 [14]=0.0100184

Peak Selection : Default(Closest Peak)
 Calculated by : Default(Area)
 Curve Fit Type : Default(Linear)
 Zero : Default(Not Forced)
 Weight : Default(None)
 Window/Band : Default(Window)
 Spiked : 0.000
 1st Coefficient : 5.532080e+006
 Intersection : 6.014722e+004
 Correction Factor : 1.000000
 Standard concentration factor : 1.000000

ID# : 6
 Name : iso-Propanol
 Type : Target
 Channel : Ch1
 Retention Time : 16.825 min
 Retention Index : 0
 Concentration : [1]=3.03666 [2]=1.003405 [3]=0.5418687
 [4]=0.3101858 [5]=0.1067771 [6]=0.04972951
 [7]=0.01397083 [8]=3.03666 [9]=1.003405
 [10]=0.5418687 [11]=0.3101858 [12]=0.1067771
 [13]=0.04972951 [14]=0.01397083

Peak Selection : Default(Closest Peak)
 Calculated by : Default(Area)
 Curve Fit Type : Default(Linear)
 Zero : Default(Not Forced)
 Weight : Default(None)
 Window/Band : Default(Window)
 Spiked : 0.000
 1st Coefficient : 3.797216e+006
 Intersection : -2.284739e+004
 Correction Factor : 1.000000

Standard concentration factor : 1.000000

ID# : 7
 Name : Hydroxyacetone
 Type : Target
 Channel : Ch1
 Retention Time : 13.300 min
 Retention Index : 0
 Concentration : [1]=2.855514 [2]=0.9609004 [3]=0.4875675
 [4]=0.3072624 [5]=0.1038742 [6]=0.04860286
 [7]=0.009361501 [8]=2.855514 [9]=0.9609004
 [10]=0.4875675 [11]=0.3072624 [12]=0.1038742
 [13]=0.04860286 [14]=0.009361501

Peak Selection : Default(Closest Peak)
 Calculated by : Default(Area)
 Curve Fit Type : Default(Linear)
 Zero : Default(Not Forced)
 Weight : Default(None)
 Window/Band : Default(Window)
 Spiked : 0.000
 1st Coefficient : 4.865699e+006
 Intersection : 5.855022e+004
 Correction Factor : 1.000000
 Standard concentration factor : 1.000000

ID# : 8
 Name : Ethylenglykol
 Type : Target
 Channel : Ch1
 Retention Time : 12.200 min
 Retention Index : 0
 Concentration : [1]=2.933794 [2]=1.030353 [3]=0.4898163
 [4]=0.3033639 [5]=0.09840986 [6]=0.059971
 [7]=0.01068632 [8]=2.933794 [9]=1.030353
 [10]=0.4898163 [11]=0.3033639 [12]=0.09840986
 [13]=0.059971 [14]=0.01068632

Peak Selection : Default(Closest Peak)
 Calculated by : Default(Area)
 Curve Fit Type : Default(Linear)
 Zero : Default(Not Forced)
 Weight : Default(None)
 Window/Band : Default(Window)
 Spiked : 0.000
 1st Coefficient : 4.284813e+006
 Intersection : 4.449721e+003
 Correction Factor : 1.000000
 Standard concentration factor : 1.000000

ID# : 9
 Name : Ethanol
 Type : Target
 Channel : Ch1
 Retention Time : 16.000 min
 Retention Index : 0
 Concentration : [1]=3.010594 [2]=1.02339 [3]=0.5257763
 [4]=0.2939754 [5]=0.0961865 [6]=0.04960971
 [7]=0.01299818 [8]=3.010594 [9]=1.02339
 [10]=0.5257763 [11]=0.2939754 [12]=0.0961865
 [13]=0.04960971 [14]=0.01299818

Peak Selection : Default(Closest Peak)
 Calculated by : Default(Area)
 Curve Fit Type : Default(Linear)
 Zero : Default(Not Forced)
 Weight : Default(None)
 Window/Band : Default(Window)
 Spiked : 0.000
 1st Coefficient : 2.109543e+006
 Intersection : -9.590194e+003
 Correction Factor : 1.000000
 Standard concentration factor : 1.000000

ID# : 10
 Name : Propionsäure
 Type : Target
 Channel : Ch1
 Retention Time : 13.600 min
 Retention Index : 0
 Concentration : [1]=2.962704 [2]=0.9915078 [3]=0.5019324
 [4]=0.3085198 [5]=0.1036906 [6]=0.04835313

[7]=0.01168534 [8]=2.962704 [9]=0.9915078
 [10]=0.5019324 [11]=0.3085198 [12]=0.1036906
 [13]=0.04835313 [14]=0.01168534
 Peak Selection : Default(Closest Peak)
 Calculated by : Default(Area)
 Curve Fit Type : Default(Linear)
 Zero : Default(Not Forced)
 Weight : Default(None)
 Window/Band : Default(Window)
 Spiked : 0.000
 1st Coefficient : 4.601450e+006
 Intersection : -1.609005e+003
 Correction Factor : 1.000000
 Standard concentration factor : 1.000000

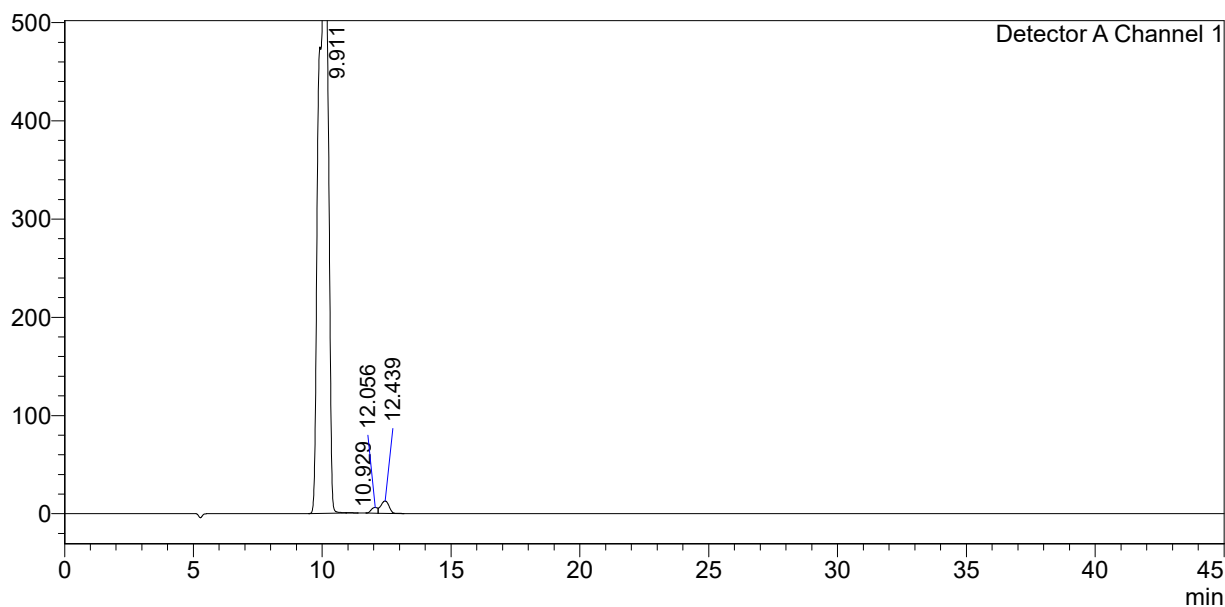
<<Column Performance>>

<Detector A>

Calculation Method : USP
 Unretained Peak Time : Time at 1st Peak
 Column Length : 150 mm
 Calculate Identified Peaks Only : Off
 Calculation of Relative Retention Time : Off

<Chromatogram>

mV



<Peak Table>

Detector A Channel 1

Peak#	Ret. Time	Area	Height	Conc.	Unit	Mark	Name
1	9.911	16016995	474919	2.151	mol/L	M	Glycerin
2	10.929	5901	445	0.000		V M	
3	12.056	100297	5755	0.022	mol/L		Ethylenglykol
4	12.439	275957	12543	0.037	mol/L	V	1,2 Propandiol
Total		16399151	493663				